

RECOMMENDATIONS FOR THE TOEFL IBT[®] TEST HOME EDITION

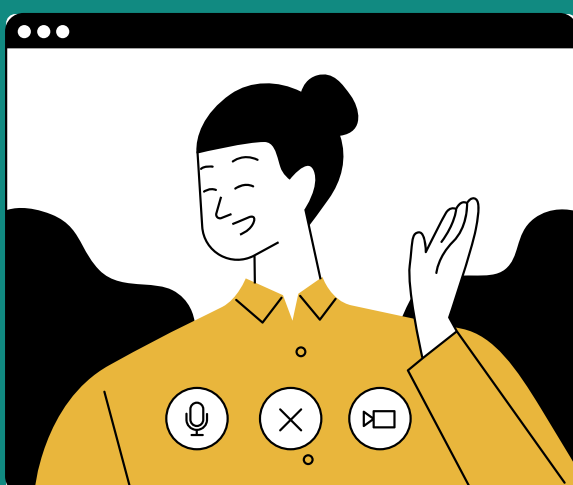
Check your equipment before the test.

BEFORE YOU SESSION

Download the **ProctorU** extension & the app **ETS** before the test.

Disable or uninstall other **test extensions** (for example: proctorio) and allow **screen sharing**.

Check that the internet bandwidth is not blocked by other uses.



Close **EVERYTHING**: every app, empty the caches and check that apps that show up automatically (zoom, microsoft teams...) are completely disabled (as they may be activated after the pause between sessions).

If you encounter a problem during the test, contact the monitor by chat or wave. Under no circumstances should you shut down your computer, close the application or seek outside help.



DURING THE SESSION

You must be alone. Your session will be interrupted if someone enters the room and you cannot leave your seat without the approval of Proctor.

You are not allowed to leave your workspace during the exam: in case of emergency, contact the Proctor and wait for it to show up.

The 10-minute break is started by the Proctor. Be sure to return to the room before the end of the break.

You cannot use your phone during the break.



AT THE END OF THE TEST

Click REPORT at the end of the test, not CANCEL.

If you click on the second option, your results will be cancelled and you will have to pay an additional fee to return them.

FOR MORE INFORMATION

<https://www.ets.org/s/cv/toefl/at-home/equipment/>

IF YOU HAVE A SPECIFIC REQUEST

Please send it to us by email at ; toefl-fr@etsglobal.org

