



GUIDE

MSCA POST-DOCTORAL FELLOWSHIP IN LYON, FRANCE

DISCOVER YOUR NEXT RESEARCH
ADVENTURE IN LYON

Our guide

01

Why choose Lyon for your MSCA Postdoctoral Fellowship?

02

All you need to know about the MSCA Postdoctoral Fellowship call

03

Find your host institution in Lyon



Why choose Lyon for your MSCA Postdoctoral Fellowship?



Lyon stands as one of France's leading academic and scientific hubs, offering an exceptional environment for research and innovation, just two hours away from Paris by train.

The city brings together a large and diverse academic community across all major disciplines :

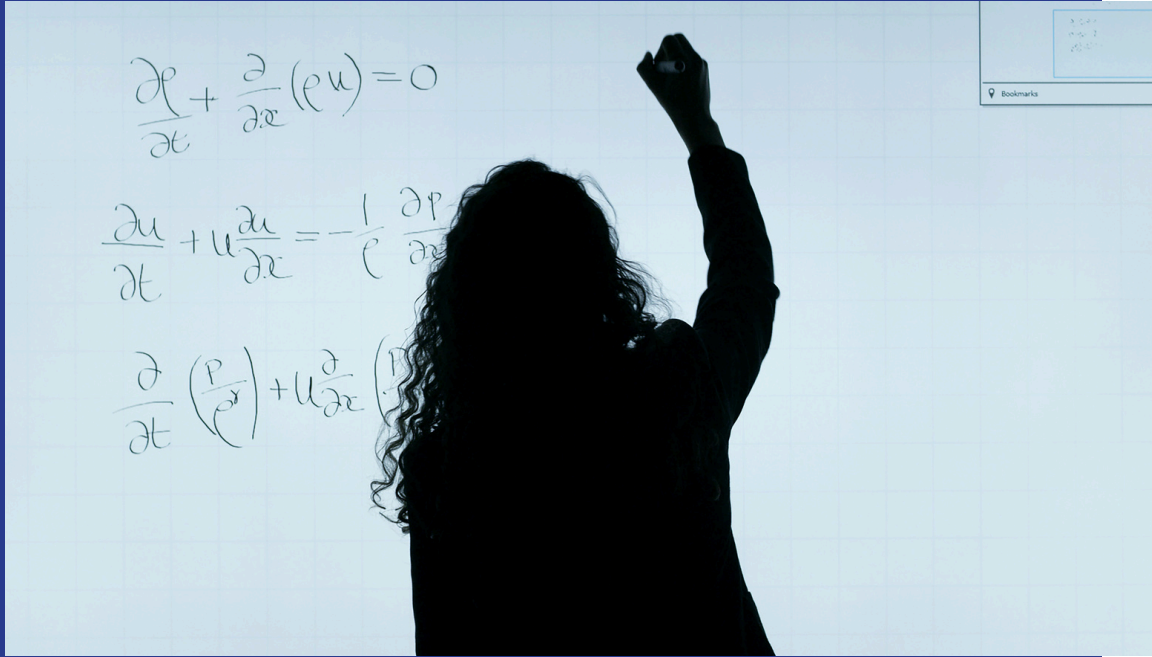
- 160 research laboratories
- 6,400 researchers and lecturers
- 175,000 students

The academic landscape of Lyon is characterized by a rich network of institutions working in synergy.

Universities such as Université Claude Bernard Lyon 1, Université Lumière Lyon 2, Université Jean Moulin Lyon 3, and the École Normale Supérieure de Lyon collaborate closely with national research organizations including the CNRS (National Center for Scientific Research), INSERM (National Institute of Health and

Medical Research), INRAE (National Research Institute for Agriculture, Food and Environment), INRIA (National Institute for Research in Digital Science and Technology), and Université Gustave Eiffel.

Other key institutions include INSA Lyon (National Institute of Applied Sciences), CPE Lyon (Chemistry, Physics, and Electronics School), VetAgro Sup (National Veterinary School) and École Centrale Lyon.



An ecosystem of excellence and collaboration

This comprehensive network is distributed across multiple campuses located throughout the city and its surrounding areas, offering easy access to advanced research infrastructure and fostering daily collaboration between disciplines and institutions.

Lyon's excellence in research is reflected in its internationally recognized achievements, from prestigious distinctions such as Cédric Villani's Fields Medal to more than 75 ERC grants and 150 European collaborative projects awarded since 2014.

The research ecosystem in Lyon thrives on a culture of collaboration and excellence programs, providing researchers with state-of-the-art facilities and shared resources.

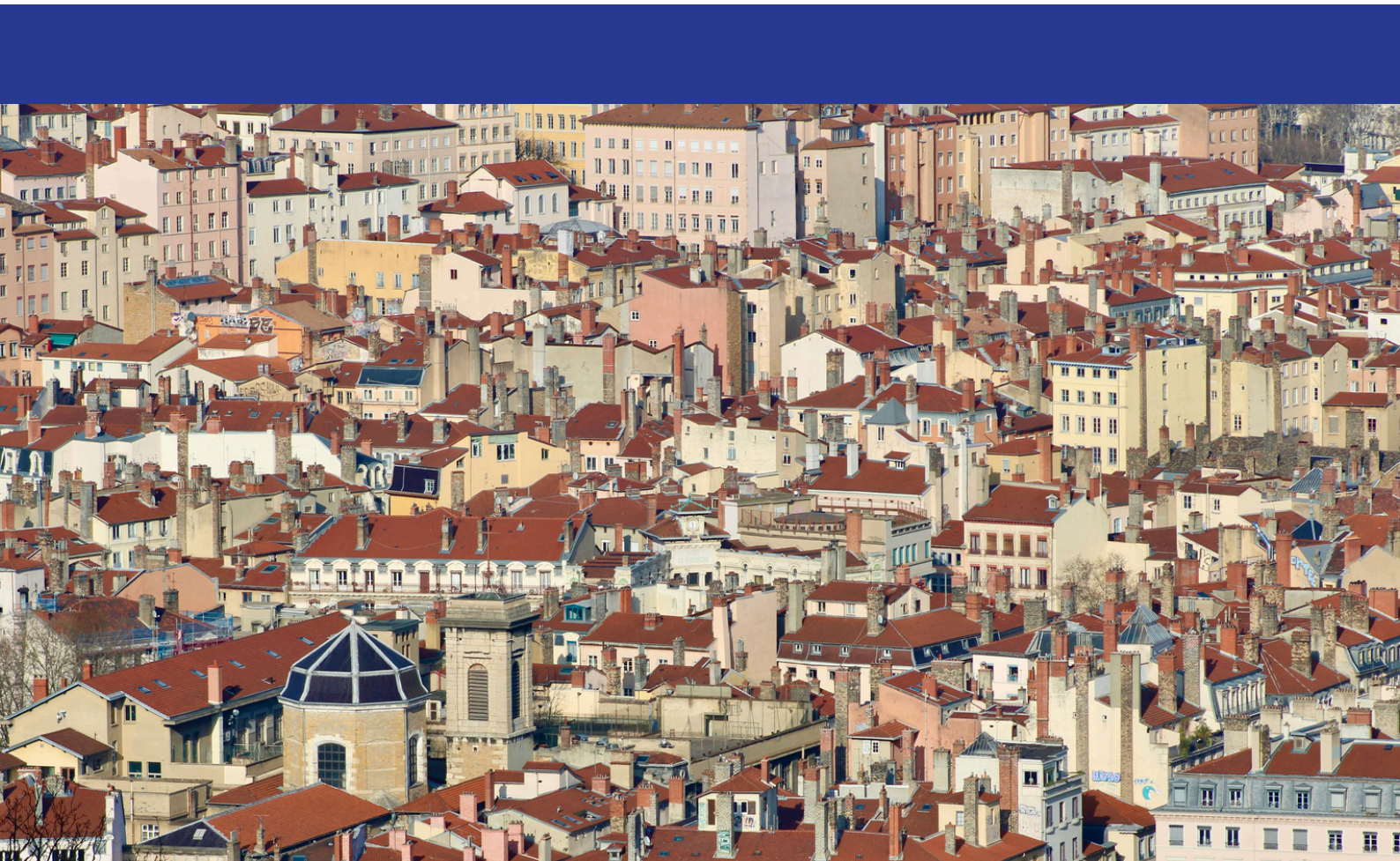
Scientists benefit from access to remarkable research infrastructure including specialized libraries, advanced technological platforms, and unique collections such as historical archives, rare manuscripts, and internationally recognized herbaria and scientific collections.

These diverse resources are particularly valuable for interdisciplinary research in the humanities and life sciences.

Life in Lyon: culture, cuisine and more

The Lyon region, renowned for its rich gastronomy, is a culinary paradise that boasts a variety of traditional dishes and vibrant markets. Culturally, it thrives with events like the Biennale of Contemporary Art and the Biennale of Dance, alongside numerous museums and exhibitions that showcase its artistic heritage.

The city also hosts a dynamic sports scene, catering to enthusiasts of all kinds. Strategically located, Lyon offers easy access to the mountains for winter sports, is only three hours from the coast, and is conveniently close to Italy and Switzerland, with a well-connected airport. The diversity of its architecture and neighborhoods adds to its charm, making Lyon a captivating destination for both residents and visitors alike.



All you need to know about the MSCA Postdoctoral Fellowship Call

Marie Skłodowska-Curie Actions Postdoctoral Fellowships (MSCA PF) fund the **international mobility of a postdoctoral researcher in a host organisation, under the supervision of a more experienced researcher.**

The objective of PFs is to support researchers' careers and foster excellence in research. The Postdoctoral Fellowships action targets researchers holding a PhD who wish to carry out their research activities abroad, acquire new skills and develop their careers. PFs help researchers gain experience in other countries, disciplines and non-academic sectors.

Types of fellowships

There are 2 types of MSCA PF; each type funds a different kind of international mobility:

- **European Postdoctoral Fellowships (EF):** these fellowships last from 12 to 24 months. They must take place in an EU member state, or an associated country to the Horizon Europe programme. The candidate can be of any nationality.
- **Global Postdoctoral Fellowships (GF):** these fellowships last from 24 to 36 months. They require:
 - An outgoing phase, lasting from 12 to 24 months in a third country (which is a country that is not an EU member state and not an associated country).
 - A mandatory return phase of 12 months, in an EU member state or an associated country.

In the context of MSCA PF, long-term residency means a period of legal and continuous residence with EU member states or Horizon Europe associated countries of at least 5 consecutive years. Absences of less than six consecutive months and no more than ten months over the whole period are permitted.

At the call deadline, the candidate must have a **maximum of 8 years** full-time equivalent experience in research; or have successfully defended their doctoral degree (even if they have not been formally awarded their doctoral degree).

The successful defence must be unconditional and must take place before the call deadline. Please note that eligible extensions of the 8-year period do exist⁽¹⁾.

Candidates to GF Fellowships must be natives or long-term residents of the return phase country.

The candidate must not have resided or carried out their main activity (work or studies) in the country where their fellowship takes places for more than 12 months in the 36 months immediately before the call deadline.

- For EF: country of the host organisation
- For GF: country of the host organisation of the outgoing phase.

Resubmission restrictions will apply for applications that received a score below 70% the previous year.



(1) Maternity leave, paternity leave, long-term illness, national service, career breaks, time spent outside research or research performed in a third countries, for nationals or long-term residents of EU Members States or Horizon Europe Associated Countries who wish to reintegrate to Europe.

Funding

Funding takes the form of **unit contributions**. For each person-month of project, the European Commission allocates unit contributions.

Contributions for the recruited researcher:

- Living allowance: 5 990 €
- Mobility allowance: 710 €
- Family allowance (if applicable): 660 €
- Special needs allowance (if applicable)

The researcher only receives the unit contributions for the recruited researcher.

Contributions for the research project and the host organisation:

- Research, training and networking contribution: 1 000 €
- Management and indirect contributions: 650 €



To account for the cost of living in each country, the European Commission has created **Country Correction Coefficients (CCC)** (only for the living allowance).

The French CCC is 118,1%; which means the living allowance for a researcher carrying its project in France is :

$$5\,990 * 118,1\% = 7\,074,19 \text{ €}$$

Specificity of the French salary

For more details, you can check : [French Salary Explained^{\(2\)}](#)

Below is a breakdown of the French salary :


- The living allowance and the family allowance (if the researcher is eligible to it) has to cover the **gross salary** (coût total employeur); which contains what the research will effectively be paid plus employee and employer social contributions.
- **Brut salary** (salaire brut) is gross salary minus employer contributions.
- **Net salary** (salaire net) is brut salary minus employee contributions.
- **Net salary to be paid** (net à payer) is net salary minus income tax.



The living allowance and the family allowance (if you're eligible) to it have to cover the gross salary ("coût total employeur").

It means your net salary to be paid won't be as high as the gross salary, because of mandatory social contributions.

How to apply

You can apply to an MSCA PF only via the Funding and Tenders Portals 

The project must be a co-construction between the international postdoctoral researcher and the Supervisor.

For more information : Boîte à outils PCN MSCA

We encourage you to seize this opportunity. European Project Managers of our respective universities and institutions, members of the European team ABILITY, will **support your application**. We will :

Help you identify a supervisor

Contribute to proof-reading

Ensure the compliance of your project with the specific requirements and rules of the funder

Offer administrative support.



Please, note that those fellowships are awarded by the European Commission via a call; not by your host organisation.

Find your Host Institution in Lyon

Lyon is home to a vibrant and diverse academic ecosystem, offering numerous opportunities for MSCA Postdoctoral Fellows.

In this section, you will find a selection of host institutions based in the Lyon area that are open to welcoming fellows within the framework of the MSCA Postdoctoral Fellowships.

Explore our **list of hosting offers from institutions across the Lyon area**. This online file is regularly updated by the institutions themselves, providing up-to-date information on available research topics, potential supervisors, and contact details. Check back often for new opportunities!



Find your MSCA PF host in Lyon ! 

Each institution brings its own strengths, research focus, and international outlook, providing fertile ground for innovative projects and meaningful collaborations. **Explore the profiles below to identify potential hosts aligned with your research ambitions !**

- CNRS Rhône Auvergne Delegation DR7
- Ecole Normale Supérieure de Lyon
- Hospices Civils de Lyon
- Université Claude Bernard Lyon 1
- Université Jean Moulin Lyon 3



CNRS Rhône Auvergne Delegation DR7



01 Overview

02 Welcome to CNRS Rhône Auvergne Delegation DR7

03 Need help for your application ?

Access quickly to each part



Overview

A major player in basic research worldwide, the **CNRS** is the only French organisation active in all scientific fields. The **CNRS Scientific Office (DGDS)** steers, alongside the **Chairman** and **CEO**, the organisation's scientific policy. It coordinates the activities of the **CNRS institutes**, promotes interdisciplinarity, and establishes partnerships with various actors in research on the regional, national, European, and international level.

CNRS at a glance



> 1 100 laboratories



28 800 scientists



5 000 staff



10 Institutes



4 billion €



100 start-ups
per year

The CNRS laboratories are spread across all of French territory. They are for the most part **joint research units (UMR)** associated with a university, higher education institution, or other research organisation. These national laboratories are joined by 80 international research laboratories.

[Check out CNRS's website](#)

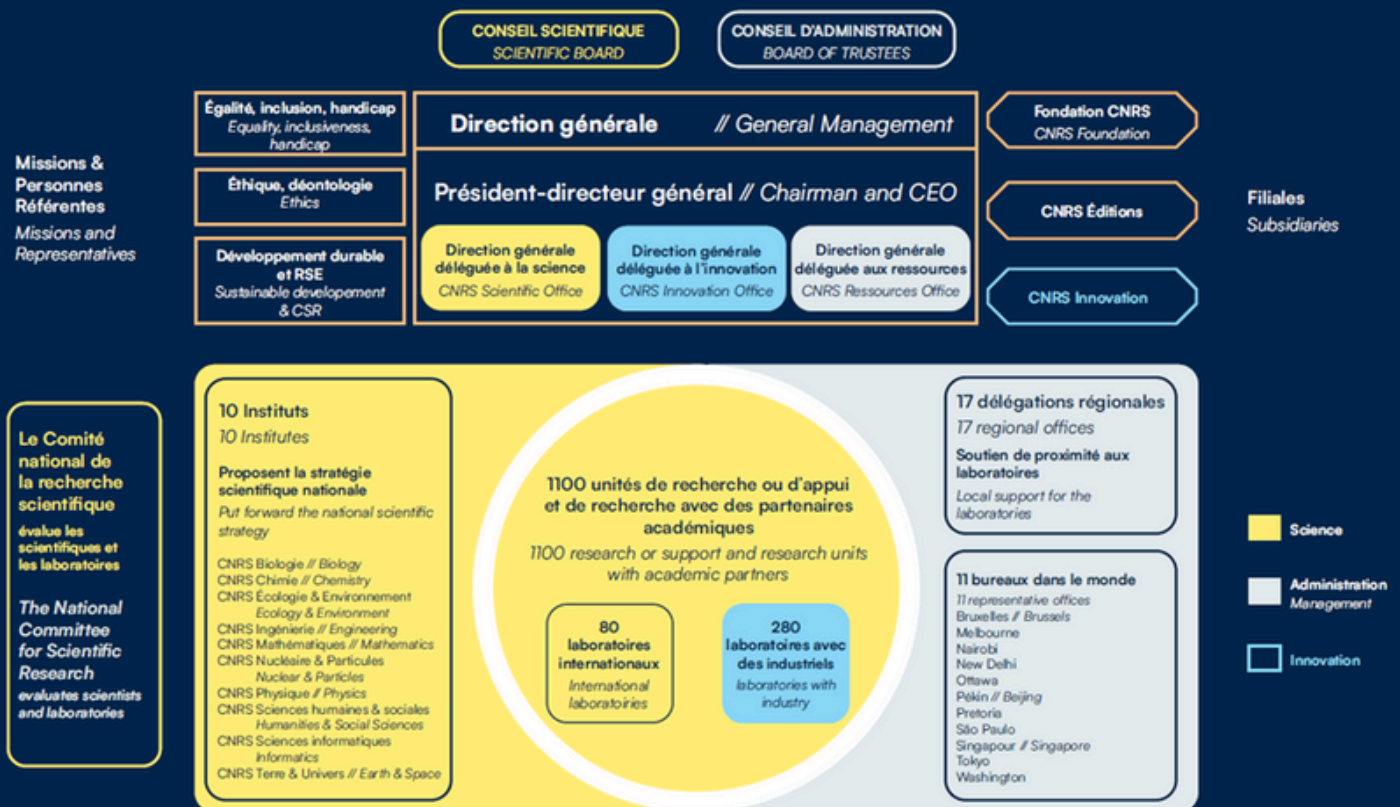


Overview

The **CNRS's scientific management** includes the **ten institutes** that steer the organisation's research strategy within their discipline, and coordinate the activities and projects of the laboratories under their supervisory authority.

CNRS organisation

Le CNRS au service des laboratoires et des scientifiques
The CNRS serves the laboratories and scientists



[Discover CNRS's institutes](#)

Welcome to CNRS Rhône Auvergne Delegation DR7

The scientific potential

The **CNRS Rhône Auvergne Delegation** has three main sites: **Lyon-Villeurbanne**, **Clermont-Ferrand** and **Saint-Étienne**, as well as a laboratory outpost in the south of **Ardèche**. The region is the second largest scientific area in France after the Île-de-France region, issuing a total of **5,500 publications per year**.



**126 operational research
and service structures**



312 M€



**2700 scientists and
staff**



103 start-ups

The CNRS in Rhône Auvergne is one of the main public research players in the region. Its laboratories work in all fields of knowledge and foster productive dialogue between natural and human sciences. This specificity is reflected in the range of units at the Lyon and Clermont-Ferrand sites, which are decidedly multidisciplinary with 48% of the labs having at least two scientific institutes attached to them.

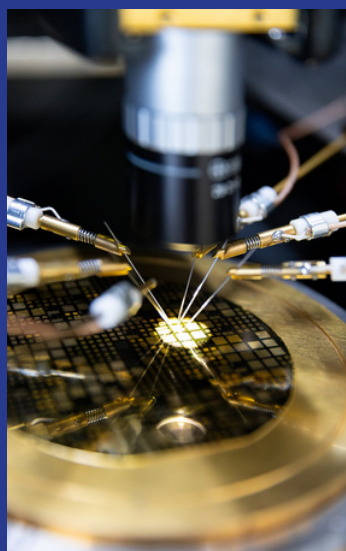
Contact CNRS laboratories



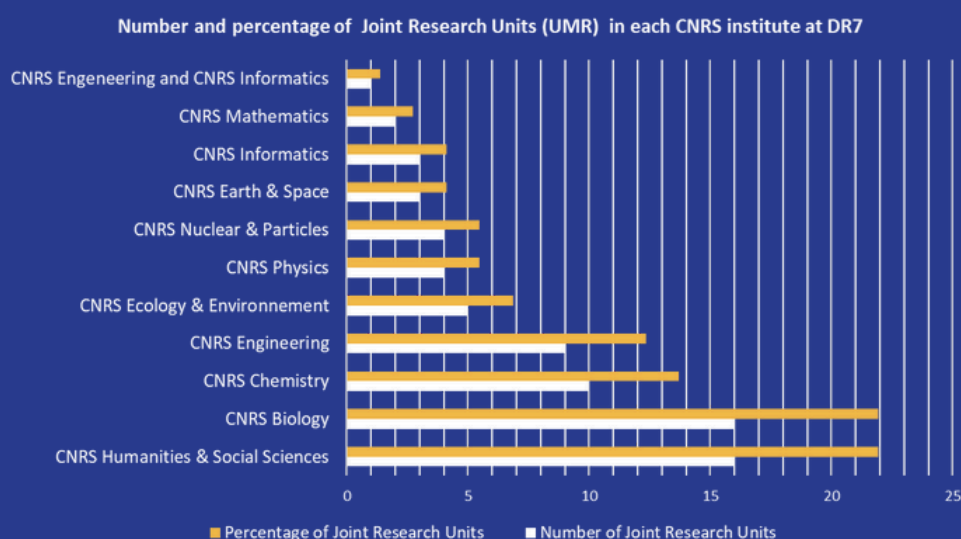
The research landscape in Rhône Auvergne

The Rhône Auvergne Delegation shares the supervision of almost all its operational research and service structures with some **twenty academic partners**. Its operation particularly integrates this partnership logic and aims at building coherent site policies.

At the **Lyon Saint- Etienne site**, the institutions are federated within the **University of Lyon COMUE** (association of universities and institutions). The **TTAC** (technology transfer accelerator company) Lyon works with the CNRS to support laboratories in their technology transfer procedures. CNRS is a founding member of the **PUI Impulse University Innovation Hub**.



© Simon BIANCHETTI
Ampère / CNRS Images



The labs with ties to the CNRS are involved in the region's various research networks. It is France's leading region in terms of **innovation and technology transfer**. Nearly 40 projects selected as part of the future investment programme involve or are coordinated by laboratories attached to the CNRS in Rhône Auvergne. Finally, following the example of the Priority Research Programmes and Equipment (PEPR), this territory is rich in **"France 2030" projects** which aim to contribute to the development of innovative technologies, to the ecological transition and to French industrial sovereignty. CNRS is partner in 8 Lyon University **"Laboratory of Excellence"**.

Need help for your application ?

At CNRS Rhone Auvergne DR7 you can get support from the **European programmes division** at the **Partnership and Development Department (PDD)**. The PDD is a local department designed to promote and formalise laboratories' relations with the national and international socio-economic fabric. The department's staff will help you with all applications for public and private funding and the socio-economic development of your research work.

The **European programmes division** supports researchers in their projects, from finding the good call to grant application and project management.



Identification of opportunities : dissemination and advice on responding to calls for projects and monitoring of the project's administrative and legal aspects.



Assisting **the researchers in their project set up** : co-writing nonscientific parts and structuring of the proposal, assistance on the EU Portal for proposal submission, budget set up and analysis for re-submission, **contracting process, project launching** and **project management**

If you don't find the perfect project, please contact us and we'll help you find a supervisor :



europe@listes.dr7.cnrs.fr

École Normale Supérieure de Lyon



01 Overview

02 Welcome to ENS de Lyon

03 Need help for your application ?

Access quickly to each part



The École Normale Supérieure de Lyon (ENS de Lyon) is a public institution of higher education and research and more precisely an EPSCP, i.e., a public institution of a scientific, cultural, and professional nature. Built on the tradition of the ENS de Fontenay-Saint-Cloud, founded in 1880, the ENS de Lyon also focuses on educational research. It is a symbol of French Republican meritocracy and it remains committed today to disseminating knowledge to the widest audience and to promoting equal opportunity. It encourages interdisciplinary studies to foster a better understanding of complex contemporary issues. It trains normalien pupils or students, as well as guest students, in a multitude of disciplines.

ENS de Lyon at a glance



12 Departments
30 Research Units



2400 students



600 staff



200
international
partners



700 researchers
& faculty members



40 Master's
degrees



A highly selective research-intensive graduate school (7th in 2024 THE world ranking of best small universities, 1st in France).

ENS de Lyon develops top-level research in the fields of exact and experimental sciences and the humanities and social sciences.

[Check out ENS's website](#)



The map shows the ENS de Lyon campus area, including the Rhône river, tram stations, and various buildings. The map highlights three welcome desks: ENS de Lyon Campus Descartes, ENS de Lyon Campus Monod, and ENS de Lyon Campus Descartes. It also shows the location of the BSL (Library) and the Buisson / IFE. The map includes a legend for the tram lines and a scale bar.

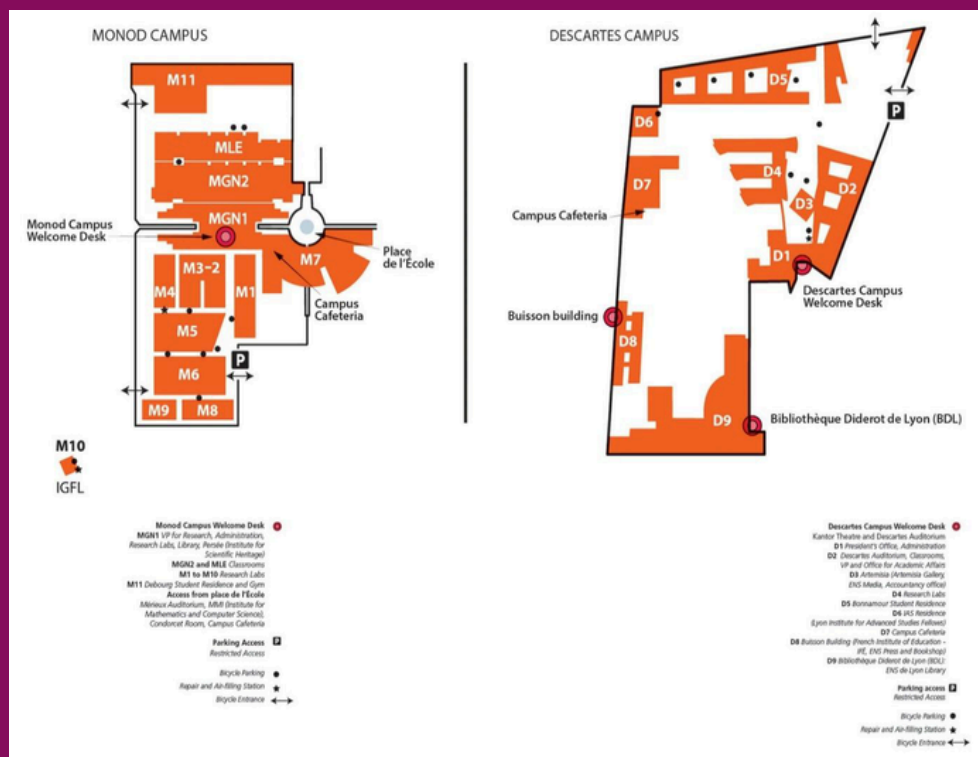
ENS DE LYON
Welcome desk
15 parvis René Descartes,
69607 Lyon

ENS DE LYON
Welcome desk CAMPUS MONOD
48 allée d'Italie,
69607 Lyon

BSL (Library)
Welcome desk
5 parvis René Descartes,
69607 Lyon

BUISSON / IFE
Accueil
19 allée de Fontenay,
69607 Lyon

IGPL
Welcome desk
32-34 avenue Tony Garnier,
69607 Lyon



Welcome to ENS de Lyon

University of excellence



ENS de Lyon develops top-level research in the fields of exact and experimental sciences (biology, chemistry, computer science, mathematics, physics, earth sciences) and the humanities and social sciences (literature and arts, languages, philosophy, social sciences, economics). ENS de Lyon was awarded the **HR Excellence in Research label** in March 2019 ; since then, it has been implementing HRS4R with a focus on quality and by equipping itself with the necessary resources to do so. This label is due to be renewed in 2025. Each year, researchers from ENS de Lyon produce a large number of publications: articles in scientific journals, conference proceedings, books, etc. These publications are a sign of the dense and abundant activity of the laboratories. The laboratories are co-supervised by Lyon universities and national research organizations – as CNRS, INRAE, INSERM, Inria. Students at ENS de Lyon also have the opportunity to create their own research laboratory (Junior Lab) to discover research through practical learning.

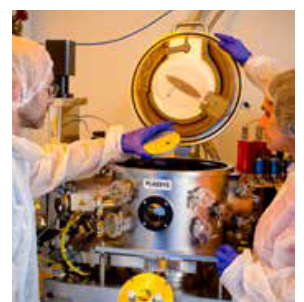
Research

ENS de Lyon supplies its laboratories with high-level equipment and provides support services to researchers in their initiatives. Whether for the implementation of international projects or the promotion of their work, ENS de Lyon counsels researchers at each important stage of their activity.

 ingenierie.projets@ens-lyon.fr



Discover ENS laboratories 



University of excellence

Education

Working in close collaboration with leading researchers, students at ENS Lyon are immersed in a research-driven learning environment. Faculty members actively involve students in their academic work, sharing expertise, methodologies, and access to advanced laboratories: a practical, inquiry-based approach that strengthens academic rigour and prepares students for careers in academia, public service, or industry. Promoting academic exchange, the institution places a strong emphasis on international mobility and offers numerous opportunities for students to pursue part of their education abroad, reinforcing ENS Lyon's global outlook and fostering intercultural competence.



Natural Sciences

- Biology
- Chemistry
- Computer Science
- Mathematics
- Physics
- Earth Sciences



Humanities and Social Sciences

- Arts & literature
- Economics
- Education and digital humanities
- Foreign languages, Literatures & civilization
- Philosophy
- Social Sciences



Academic & international

- (Students Exchange (Credit Mobility) 1 or 2 semesters
- Degree-Seeking Students : 40 Master's degrees)
- Joint Degrees
- Dual PhDs
- Internships



University of innovation

Technological and industrial innovation

ENS Lyon actively fosters technological and industrial innovation through close collaboration between academic research and industrial stakeholders. By leveraging its cutting-edge research in disciplines such as physics, chemistry, computer science, and engineering, the institution contributes to the development of new technologies and innovative solutions with real-world applications.

Researchers at ENS Lyon engage in partnerships with companies, startups, and public institutions to transfer knowledge and promote innovation, particularly in emerging sectors like artificial intelligence, materials science, biotechnology, and quantum technologies. The school also supports innovation through dedicated platforms, incubators, and technology transfer services, encouraging entrepreneurship and the transformation of scientific breakthroughs into industrial solutions. This approach reinforces ENS Lyon's role as a key player in driving scientific progress and economic development on both national and international levels.

Innovative educational approach

ENS Lyon adopts an innovative educational approach that combines academic excellence with hands-on experience and interdisciplinary learning. Rooted in a strong research culture, education at ENS Lyon encourages students to engage directly with current scientific and intellectual challenges, often working alongside researchers in laboratories and research teams. The curriculum promotes critical thinking, autonomy, and collaborative work, with flexible pathways that allow students to tailor their education to their interests and career goals.



Need help for your application ?

At ENS de Lyon, you can get support from the **ENS de Lyon
Ingénierie Project team !**

ENS de Lyon Ingénierie Project team supports the **engineering
and management of innovative, research-driven projects.**



This structure is dedicated to helping the researchers of ENS de Lyon apply for european or national funding opportunities. On the european side, the main goal is to **increase the participation and success rate of ENS Lyon researchers in european research programmes**, which have now become strategic in the research funding landscape.

Need help for your application ?

In this context, **ENS de Lyon Ingénierie Project team supports the researchers by :**



Awareness and Training of Researchers: Inform researchers about calls for projects, train them in project engineering, and raise their awareness of the importance of diversifying their sources of funding.



Project Development Support: Provide researchers with guidance on financial, administrative, legal, and practical aspects — from structuring the proposal to signing the contract.



Project Negotiation: Negotiate with funding bodies as the project evolves.



Project Monitoring and Development: Contribute to the administrative, legal, and financial monitoring of projects within the framework of audits.

Are you interested in MSCA Postdoctoral Fellowship at ENS de Lyon ?

Take a look at its hosting offers ! 

If you don't find the perfect project, please contact us and we'll help you find a supervisor :



ingenierie.projets@ens-lyon.fr

Hospices Civils de Lyon (HCL)



01 Scientific excellence

02 Driving Innovation in healthcare

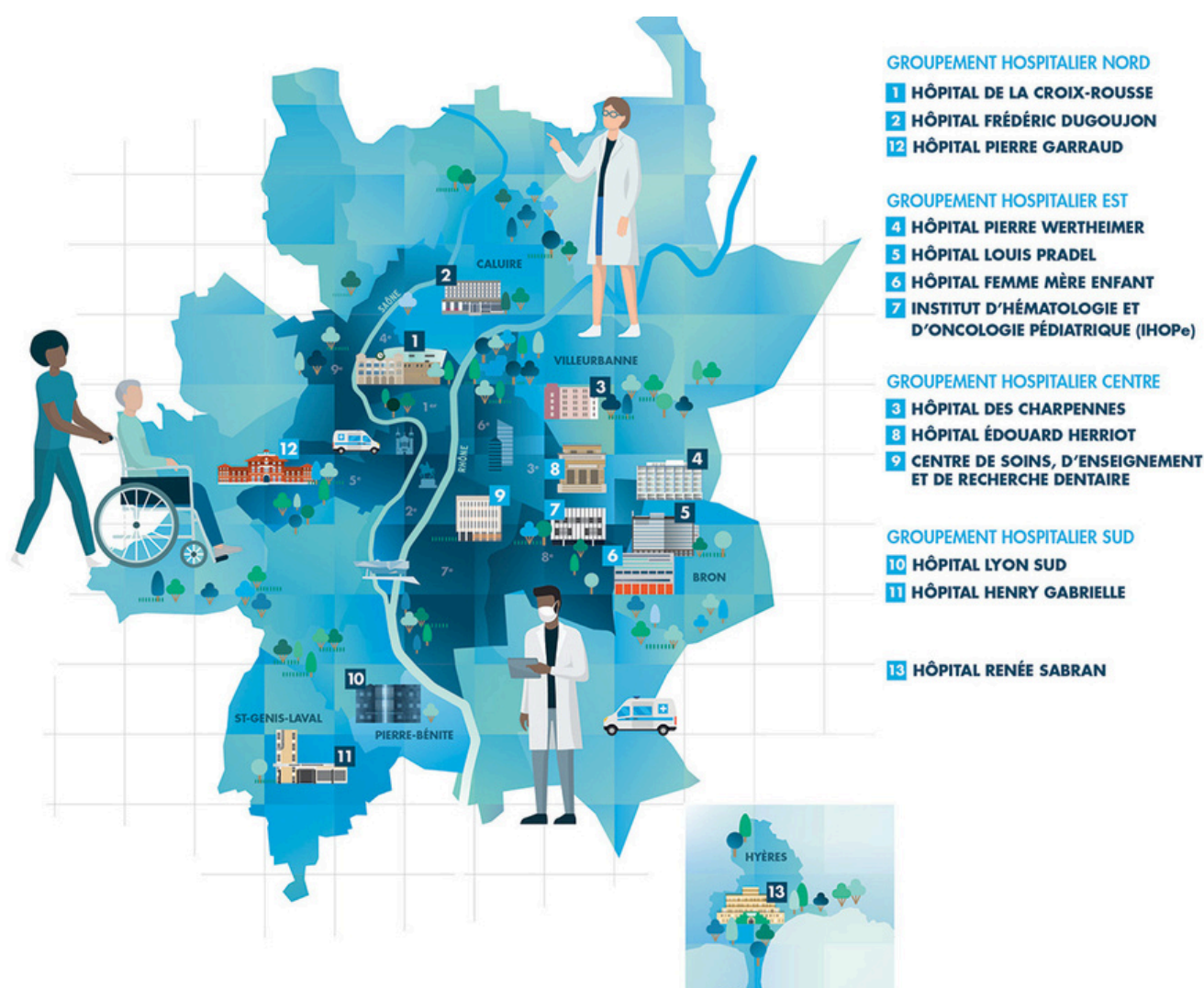
03 An attractive and stimulating research environment

04 Research support and infrastructures

05 Contacts

Overview

With 200 years of medical history, the **Hospices Civils de Lyon** is comprised of **13 campuses**, all of them driven by a commitment to excellence in all areas of medicine and surgery. HCL includes a staff of 23,000 of which 5,000 are physicians and over 13,000 are nursing staff, all dedicated to a fundamental duty: ensure that all patients, without discrimination, have access to care, irrespective of their illness, 24/7, 365 days per year.

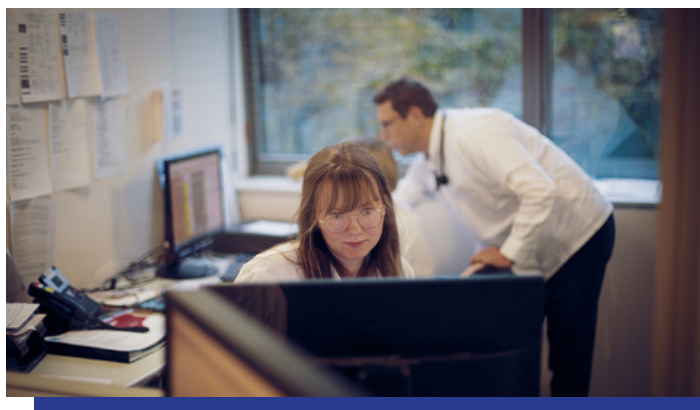


Scientific excellence



Research

Research is a strategic priority for the Hospices Civils de Lyon. The University Hospital brings together the expertise and equipment required to conduct cutting edge and interdisciplinary research, in close collaboration with its institutional and private partners. Thus, each day it contributes to medical and therapeutic innovation and breakthroughs, for the benefit of patients.



HCL fosters research at all levels:

from collaborations with local authorities in the Lyon metropolitan area — through projects aimed at bridging the gap with community-based medicine ("médecine de ville") — to a structured regional partnership with other hospitals to share expertise and resources.

HCL is also actively involved in national innovative initiatives to strengthen research capabilities and participates in European and international projects to expand networks and promote knowledge exchange.

The HCL has a strong expertise in multiple domains, and it particularly known for its excellence in research in **hepatology-infectiology, oncology, cardiology-nutrition-metabolism, onco-hematology and neurosciences.**

To further research and development, the HCL offers state-of-the-art facilities covering the full spectrum of medical imaging and translational research. Our platforms include cutting-edge clinical and research MRI systems (1.5 T, 3 T, and soon 7 T) providing exceptional resolution and accuracy for neurological, cardiovascular, and oncological studies. A wide range of cutting-edge technology platforms and expert support services to accelerate research and innovation. These include biobanking facilities, genomics and molecular biology platforms, collaborative innovation platforms, and many more.



A newly created **clinical data warehouse (EDS)** is a key project in HCL's strategy to address healthcare data challenges, at the start of the European Health Data Space (EEDS).

It will **structure and collate health data produced by HCL to make it available to researchers**, storing non-objectionable patient data securely while respecting patient privacy. This unique resource will allow innovative and large-scale research using big data from France's second largest university hospital, as well as the other hospitals in the region.



Education

Each year, Hospices Civils de Lyon trains:

| | |
|--|--|
| 750 DOCTORS | |
| 1,150 NURSES | 150 ELECTRO-RADIOLOGY TECHNICIANS |
| 70 HOSPITAL PHARMACY DISPENSERS | 110 HEALTHCARE EXECUTIVES |
| 162 NURSING AUXILIARIES | |
| 160 MIDWIVES | 50 PARAMEDICS |

Each year, the Hospices Civils de Lyon contributes to the higher education of nearly 5400 healthcare professionals. It also provides **in-service training** for all employees to ensure that they remain at the cutting edge of expertise.



Healthcare

The HCL is one of the only two French university hospital that is able to **provide care for all pathologies, benefitting from a very large expertise to offer innovative and excellent treatment and care to our patients.**

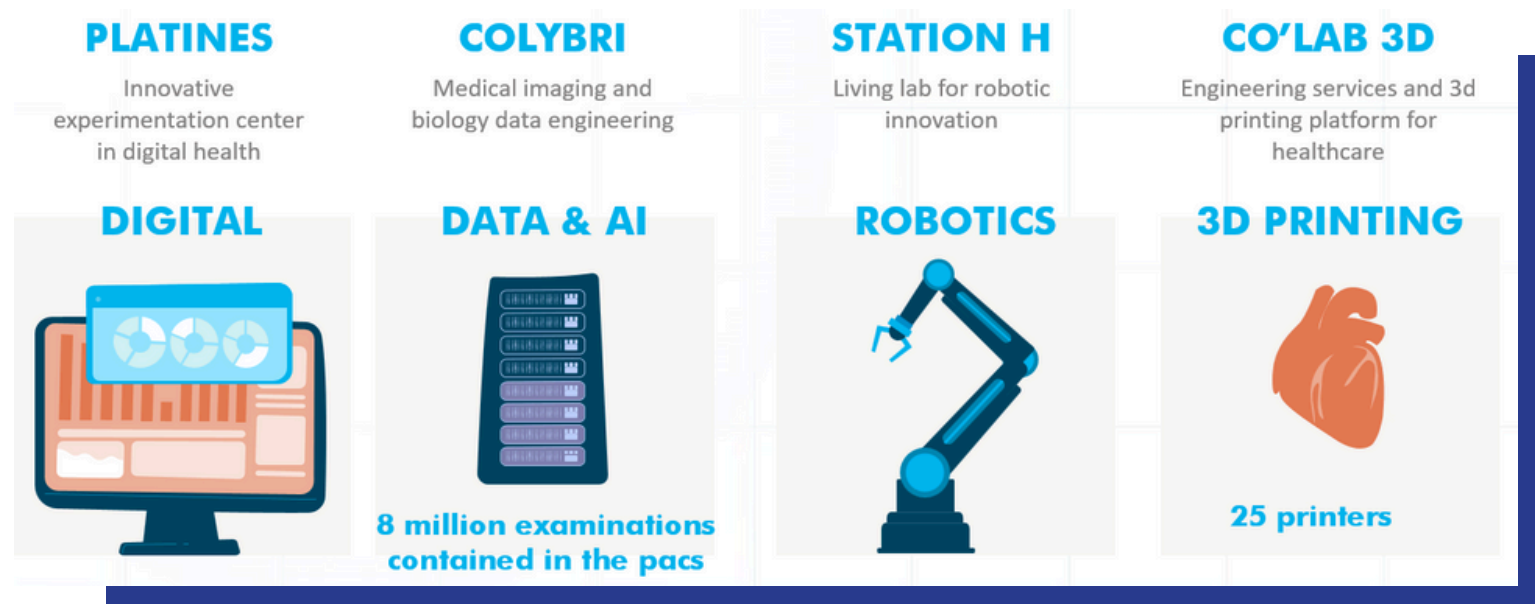
The HCL also operates numerous **national centers of reference for rare diseases** and rare cancers, and our teams are members in 17 of the 27 european reference networks for rare diseases.

Innovative treatments are also a priority for the HCL: in 2017, the HCL were the first French university hospital to participate in a trial of CAR-T cell treatments. In 2023, they were the first to treat a patient with lung cancer using cNeT cell therapy. 2025 marks a further step in the HCL's involvement in the development of cell therapies with the inauguration of their own bioproduction platform for innovative therapies, ARTEMIS.

Numerous procedures are provided every day at the HCL, including groundbreaking ones: the first artificial retina implant was implanted at the HCL in 2021, the first larynx transplant in France took place at the HCL in 2023, and more recently, an HCL transplant team performed a simultaneous transplant of a kidney and pancreatic islets taken from a single donor, leading to a permanent cure for the patient's diabetes.

Driving innovation in healthcare

The HCL are the first French university hospital to establish a dedicated Innovation department. This pioneering initiative supports healthcare professionals in developing their ideas through an intrapreneurship program, while also fostering collaboration with innovative health companies to ensure their solutions meet real hospital needs. To achieve this, HCL relies on thematic platforms in areas such as digital health, robotics, data, 3D printing, and medical devices:



At the European level, the Station H platform is part of the TEF-Health initiative, reinforcing HCL's role in driving innovation in healthcare.

✓ Field Access

Conduct feasibility, opportunity, interoperability, or technical integration studies and test your solutions with our healthcare professionals.

✓ Co-Design

Medical device*, innovative equipment, connected object, accessory...
 Prototype your ideas at the heart of their future environment.

**Custom-made Class I medical device manufacturing – ISO 13485 certification*

✓ Simulated Environment Study

Optimize your solution by testing it in a simulated environment (simulated rooms and 3D simulator) and perform a usability test for CE marking.

✓ Real-World Experimentation

Is your solution close to market? New hospital use?
 Ensure your success by implementing it in a real hospital setting.

✓ AI Training or Validation

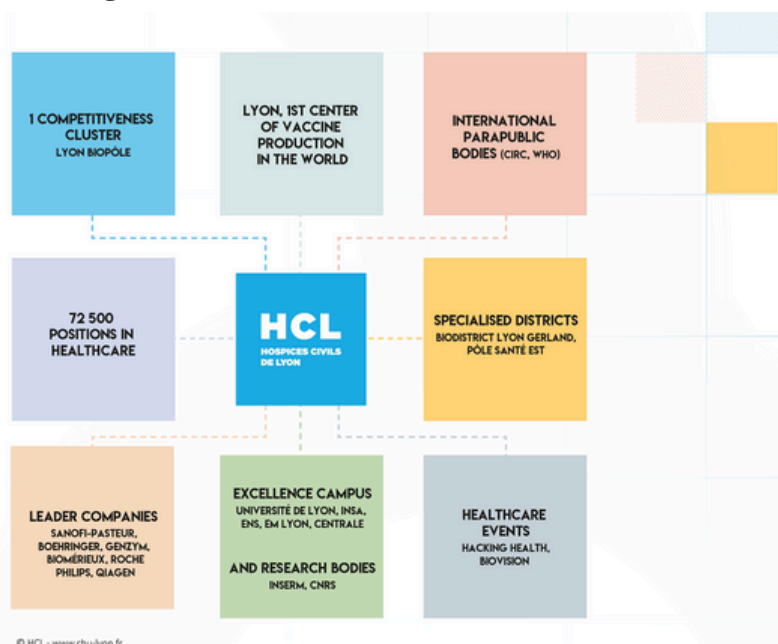
Develop your AI with our annotated, segmented, structured, and de-identified datasets.

An attractive and stimulating research environment

Hospices Civils de Lyon has been providing its expertise to Lyon's inhabitants for over 200 years. Also involved in the city's urban development, the HCL's history is inextricably linked to that of the city. Today, the city of Lyon is internationally renowned. It is France's 2nd metropolitan area, with 1.55 million inhabitants, and is the capital of Europe's 5th largest region (in terms of population and GDP). Listed as a UNESCO world heritage site, the city has also built on its heritage and rich culture to become an innovative and enterprising metropolitan area.



One of Lyon's many advantages is its strategic location in the heart of an exciting region, with plenty of outdoor activities and charming small towns to visit. Ideally located, Lyon has an international airport with many flight routes, and TGV train station allowing to reach Paris in under 2 hours.



Lyon is also part of the ten biggest European biotechnologies and health markets: the Biodistrict Lyon-Gerland includes approximately 70 organizations, employs around 5 000 staff and 2 750 academic researchers, and boasts world-class infrastructures —such as the Jean Mérieux BSL-4 laboratory, Bioaster offices, and the International Agency for Research on Cancer's new facility hosting a biobank with over 6 million samples.



The implantation of the HCL's research department in the biodistrict fosters innovation, R&D collaboration, and international development.



HCL teams carry out exciting and groundbreaking research projects with many partners, benefitting from the particularly fertile environment. Long-terms partnerships are fostered between the HCL and entities from a wide range of backgrounds:



Universities, research centres and other hospitals:

- **Claude Bernard Lyon 1 University**
- **INSERM** (National Institute of health and medical research)
- **CNRS** (National Centre national of scientific research)
- **CRNL** (Lyon Neuroscience Research Centre)
- **CLARA** (Cancéropôle Lyon Auvergne Rhône-Alpes)
- **IARC** (International Agency for Research on Cancer, based in Lyon, attached to the World Health Organisation)
- **SHAPE-Med@Lyon** draws on the scientific strengths of the Lyon site in all areas of health (human, environmental and social).

And other **university hospitals and hospitals**, particularly in the Auvergne Rhône-Alpes region



Clusters and SATT:

- **Lyonbiopôle** : accredited competitiveness cluster when it was created and is the driver of the health innovation ecosystem in Auvergne-Rhône-Alpes, ensuring that it is connected, developed and promoted.
- **Pulsalys** (Technology Transfer Acceleration Companies (SATT) Lyon St-Étienne)



Labcom and companies:

- **Joint research laboratory with bioMérieux**
- **GOPI partnership with Philips** providing early access to highly innovative technologies and equipment to HCL researchers
- Long-term partnership with **Roche** to facilitate translational research
- **2 industrial chairs with bioMérieux and Sanofi**

And numerous other projects and collaborations with **pharmaceutical laboratories and industries** based in Lyon or the region

Contact

The HCL teams are supported by the research department, and more precisely the grants office



Identify and share **European funding opportunities**



Share information and trainings on European research programmes and projects



Supporting researchers for their proposals in answer to european calls



Contact the HCL grants office for more information :

drs.aap.recherche@chu-lyon.fr

Université Claude Bernard Lyon 1

Université Claude Bernard Lyon 1



01

Overview

02

**Welcome to Université Claude Bernard
Lyon 1**

03

Need help for your application ?

Access quickly to each part



Overview

The Université Claude Bernard Lyon 1 (UCBL) is a **French public university**, that is part of the University of Lyon, a Community of Universities and Establishments (ComUE) with 10 members and 25 associates, which coordinates the Lyon-Saint-Étienne academic site. The University of Lyon is **the leading French scientific center outside Paris area**.

UCBL at a glance



61 laboratories



46 607 students



4 601 staff



68 cursus



479,3M€



84 start-ups



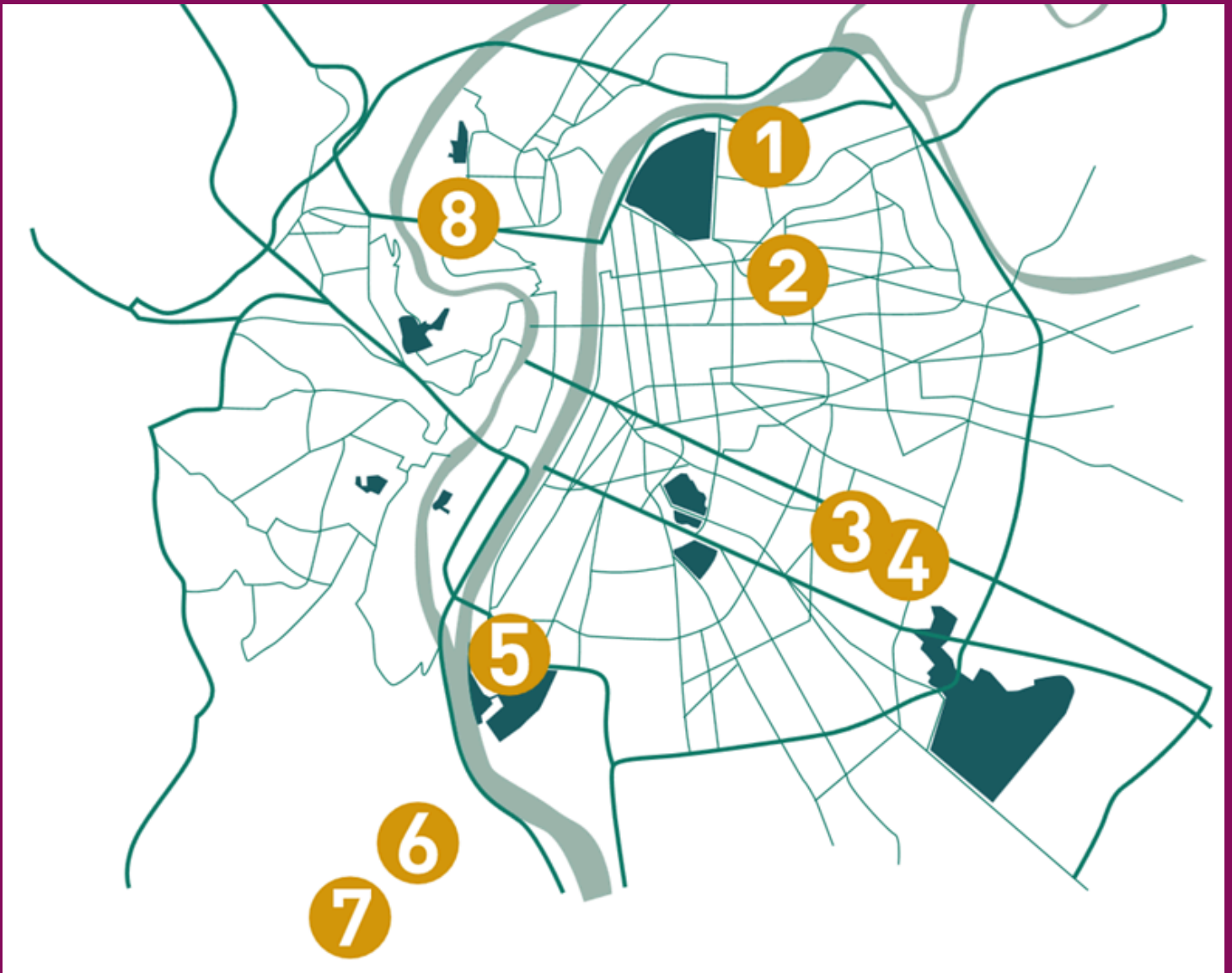
The training and research activities in the sectors of **health sciences, science and technology and sports sciences** place UCBL among the highest-ranking French universities, whatever the criteria used.

Check out UCBL's website



Overview

UCBL campuses in Lyon



1 Lyon Tech La Doua Campus

2 Gratte-Ciel-Villeurbanne Campus

3 Rockfeller Domaine

4 La Buire Domaine

5 Gerland-ISFA Campus

6 Lyon Sud Charles Mérieux Campus

7 Campus Observatoire

8 INSPE – Croix Rousse

Welcome to Université Claude Bernard Lyon 1

University of excellence

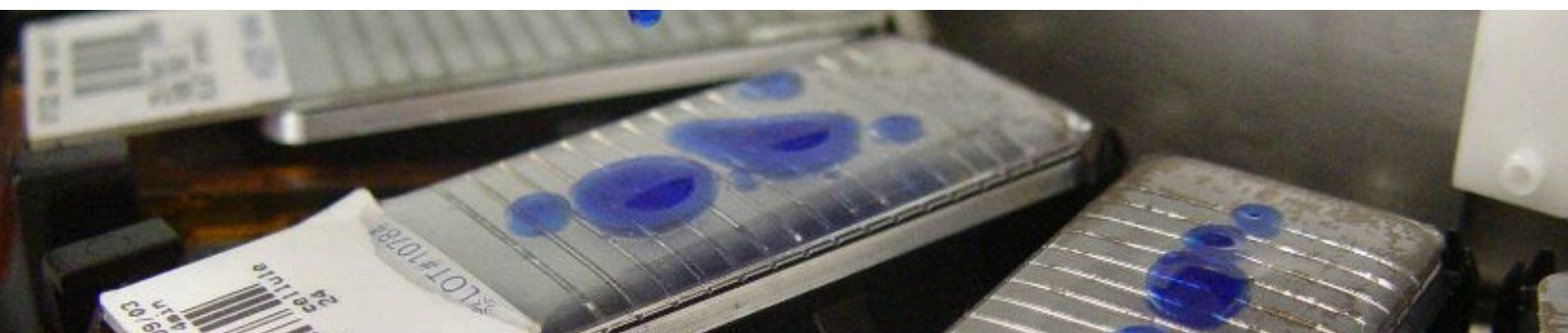
Boasting **84 research units** and producing **more than 6,000 publications annually**, the university drives scientific progress in numerous fields : health, mathematics, IT, physics, chemistry, earth and space sciences, life sciences, etc. Creator of emerging knowledge and new technologies, the University is consolidating its research excellence on a global level by developing inter- and multidisciplinary approaches targeting the major challenges facing society today.

Research

At UCBL, **the Department of Research and Doctoral Studies (DRED)** oversees cross-functional, administrative, and technical operations essential for implementing the institution's research strategy and ensuring the efficient management of its research units and technology platforms.

 direction.recherche@univ-lyon1.fr

Discover UCBL's laboratories



University of excellence

Education

Working alongside scientific players, students at UCBL **learn through research**. Faculty members share their **knowledge, work tools and facilities**: a hands-on educational approach, ensuring the quality of programme content and paving the way for successful entry to the workplace. Encouraging student mobility, the University is committed to reinforcing the **international dimension** of its programmes and providing genuine opportunities for students wishing to study abroad.



Fundamental and Natural Sciences

- Biology
- Chemistry & Biochemistry
- Mathematics
- Physics
- Earth Sciences
- Observatory of the Universe Sciences



Health and Life Sciences

- Medicine
- Midwifery
- Pharmaceutical and Biological Sciences
- Dentistry
- Rehabilitation Sciences and Techniques
- Human Biology



Science and Technology

- Electrical and Process Engineering
- Computer Science
- Mechanical Engineering
- Physical and Sports Science and Techniques (STAPS)
- University Institute of Technology (IUT)
- Financial and Insurance Sciences (ISFA)



Engineering Schools

- Polytech Lyon
- Graduate School of Chemistry, Physics and Electronics of Lyon (CPE Lyon)

University of innovation

Technological and industrial innovation

University Claude Bernard Lyon 1's overarching goal is to bridge the gap between fundamental scientific research, interdisciplinary approaches to societal challenges, and **collaborative research with external partners towards innovation.**

Being the **leading French university in terms of the number of patents filed with industry**, UCBL is an innovation factory. Ranked among the top 100 most innovative universities in the world (Reuters ranking), UCBL forges solid, long-term relations with companies within the context of its proactive research transfer and partnership policy.

Each year, this collaborative approach leads to the creation of new start-ups and innovative research platforms as well as numerous original developments in cutting-edge fields : **medicine, environment, space, etc.**

Innovative educational approach

UCBL is also committed to innovation in terms of teaching methods. Students have access to a **latest generation educational platform, innovative practical work sessions and unique teaching facilities** : cutting-edge technical platforms, 3D simulation, simulation on life-like models, drones, MOOCs, virtual learning, etc.



Need help for your application ?

At the Université Claude Bernard Lyon 1, you can get support from **the Lyon Ingénierie Projets team !**

Subsidiary of Claude Bernard University Lyon 1 and the Hospices Civils de Lyon (Lyon University Hospital), Lyon Ingénierie Projets **specialises in the engineering and management of innovative projects.**



This structure is dedicated to helping the researchers of UCBL and HCL apply for European or national funding opportunities. On the European side, the main goal is to **increase the participation and success rate of UCBL and HCL researchers in European research programmes**, which have now become strategic in the research funding landscape.

Need help for your application ?

In this context, Lyon Ingénierie Projets supports the researchers by :



Identifying and raising awareness of **appropriate European funding opportunities**



Identifying and **detecting** the new project opportunities



Organising **information** and **training sessions** on European research programmes and projects



Supporting researchers in setting up their projects : setting up European networks, re-reading projects, reading project evaluation reports, improving project re-submission, etc.

Are you interested in MSCA Postdoctoral Fellowship at UCBL ?

Take a look at its hosting offers ! 

If you don't find the perfect project, please contact us and we'll help you find a supervisor :



celluleeurope@univ-lyon1.fr / europe@lip-lyon1.fr

Université Jean Moulin Lyon 3



01 Overview

02 Welcome to Université Jean Moulin Lyon 3

03 Need help for your application ?

Access quickly to each part



Overview

The Jean Moulin Lyon 3 University (UJML) is dedicated to the **Social Sciences and Humanities**.

A prestigious and high-quality learning environment. Located in the centre of Lyon – a UNESCO World Heritage Site and the second largest university town in France – and in Bourg-en-Bresse (Ain), the University offers an exceptional and high-quality learning environment.

UJML at a glance



16 research units



27 661 students



622 associate &
full professors
and teaching
staff



23 specialised libraries



1 Maison de la Recherche
(280 m²)

© David VENIER - Université Jean Moulin Lyon 3



[Check out UJML's website](#)

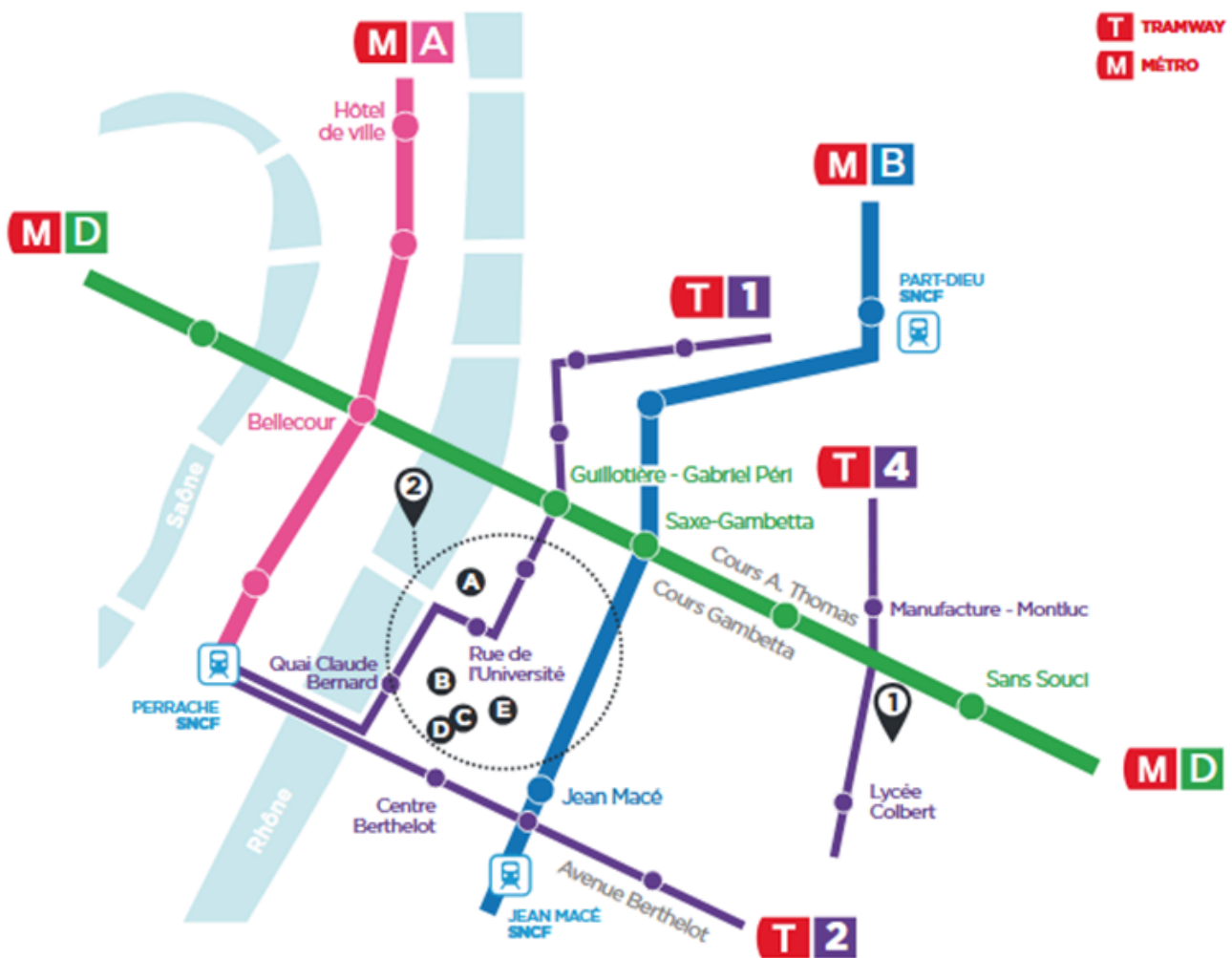


UJML is a major regional, national and international player in the university and socio-professional environment and develops research where high-quality, subject-specific skills feed the thought processes and solutions relating to the major social challenges of our time.

This research development is performed internationally in collaboration with the major partner universities of the International Alliance of the Université de Lyon.

Overview

UJML campuses in Lyon



1 Manufacture des Tabacs Campus

2 Riverside Campus (Quais)

A Palais de l'Université Building

B Athéna Dugas Building

C IUT Jean Moulin, Vocational training Institute

D MILC - International Languages and Cultures Centre

E Eugène Chevreul Research Centre

Welcome to Université Jean Moulin Lyon 3

University of excellence

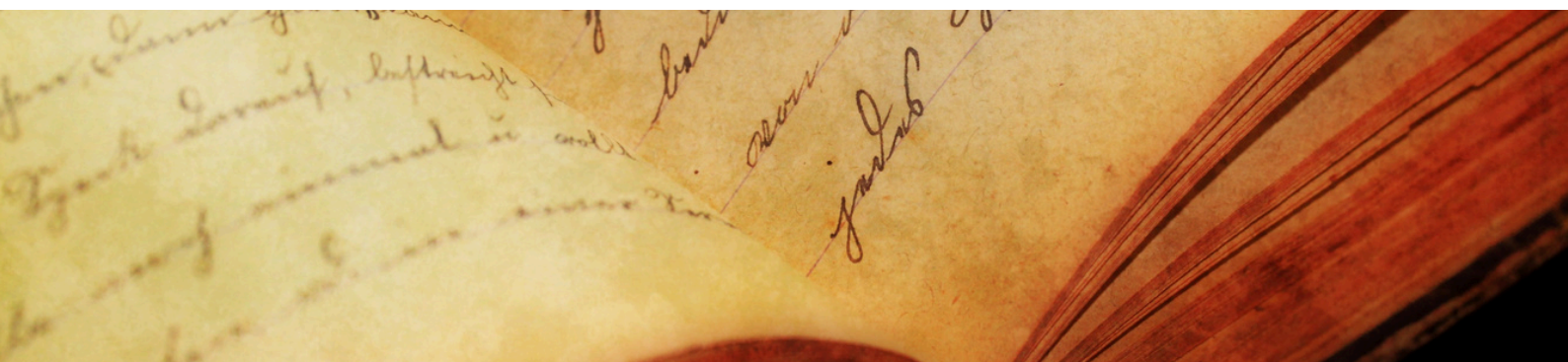
Jean Moulin Lyon 3 University is home to **16 research units** to which our professors are assigned. These units include the **joint research units** (UMR), which have several supervisory bodies (other universities, schools, research bodies, etc.), including the French **National Centre for Scientific Research** (CNRS). Within these units, research is developed on a disciplinary basis (**law, geography, management, economics, history, languages, literature, philosophy, and information and communication sciences**) or on an **interdisciplinary** basis, addressing cross-disciplinary themes or historical periods.

Research

At UJML, the **Department of Research and Doctoral Studies (DRED)** oversees cross-functional, administrative, and technical operations essential for implementing the institution's research strategy and ensuring the efficient management of its research units.

 recherche@univ-lyon3.fr

Discover UJML's research units



A leading Social Sciences and Humanities research



Human Geography, Law, Anthropology

EVS - Environnement, Ville, Société (UMR 5600) Environment, City, Society (geography, urban planning, anthropology, law, engineering sciences, architecture)



Management of Organizations

MAGELLAN - Management des organisations (UR 3713) Finance, Human Resource Management, Socio-Economic Management, Strategic Management, Marketing, and Information Systems.



Literature & History

CIHAM - Histoire, Archéologie, Littératures des mondes chrétiens et musulmans médiévaux (UMR 5648) History, Archeology, Literature of the medieval Christian and Muslim worlds

HISOMA - Histoire et Sources des Mondes Antiques (UMR 5189) History and Sources of the Ancient Worlds (Sciences of Antiquity, such as archaeology, history, literary studies, philology, epigraphy, numismatics, iconography)

IETT - Institut d'Études Transtextuelles et Transculturelles (UR 4186) Civilization, cultural history, arts and literature within these linguistic and cultural areas: English, Asian, Arabic, German, Scandinavian and Mediterranean

IHRIM - Institut d'Histoire des Représentations et des Idées dans les Modernités (UMR 5317) History of representations and ideas (16th-20th centuries) (philosophy, French and foreign literature, musicology, theatrical studies, history of art, history of science and technology)

LARHRA - Laboratoire de recherche historique Rhône-Alpes (UMR 5190) Modern and contemporary history and history of art

MARGE - Écritures de la marge, marges de l'écriture (UR 3712) Literature and comparative literature (18th-20th centuries)

A leading Social Sciences and Humanities research



Philosophy

IRPhil - Institut de Recherches Philosophiques de Lyon (UR 4187)
Philosophy



Linguistics

CEL - Centre d'études linguistiques (UR 1663) Linguistics Research Center - Corpus, Discourse and Societies



Communication & Information

ELICO - Équipe de recherche de Lyon en sciences de l'information et de la communication (UR 4147) Information and communication sciences

European Research Projects at UJML

(Selection):

- MERGING (2021-2024) (Research & Innovation Project)
- MSCA-PF Performing Archive (2021-2022)
- MSCA-PF TransGov & Law (2019-2022)



Law

CLHDPP - Centre lyonnais d'histoire du droit et de la pensée politique (UR 669)
History of law and political thought

CRDMS - Centre de recherche en droit et management des services de santé (UR 4588) Law and management of health services

EDIEC - Équipe de droit international, européen et comparé (UR 4185)
International, European, and comparative law

EDPL - Équipe de droit public de Lyon (UR 666) Public law

ELJ - Équipe de recherche Louis Josserand (UR 3707) Private law (family law, criminal law, company law, liability insurance, wealth)

UJML is partner of 3 France 2030 Programme research projects on SSH (9 M€ each) :

- DemoCIS – Democracies, Citizenship and Institutions facing the transformations of public Spheres (2025-2032).
- FORESEE – Living with the CCC (consequences of climate change), towards reshaping the social Contract (2025-2033).
- ReligiS – Religions and Societies Facing Contemporary Challenges (2025-2031).

Need help for your application ?

At the Jean Moulin Lyon 3 University, you can get support from the **Pôle projets de recherche**.

This service is dedicated to helping the researchers of Lyon 3 apply for European or national funding opportunities. In this context, it supports the researchers in the various steps of their projects, from **identifying relevant calls for proposals to setting up and managing their projects**.

This service also provides **Expert Support** for your research project : tailored advice, strategic and editorial guidance, critical reviews of scientific and technical sections, and insights into evaluators' expectations for each part of your submission.



Are you interested in a MSCA Postdoctoral Fellowship at UJML?

Take a look at its hosting offers ! 

If you don't find the perfect project, please contact us
and we'll help you find your Supervisor :



dred-projets@univ-lyon3.fr