

YOKOHAMA CITY UNIVERSITY



PROSPECTUS 2019

Contents

1	Facts and figures
2	Introduction to Yokohama
6	Academics overview
7	School of International Liberal Arts
8	School of Economics and Business Administration
9	School of Science
10	School of Data Science
11	School of Medicine
13	Graduate School of Urban Social and Cultural Studies
14	Graduate School of International Management
15	Graduate School of Nanobioscience
16	Graduate School of Medical Life Science
17	Graduate School of Medicine
18	Research centers
21	Hospitals
22	YCU's global network
24	International exchange
26	Study in English in Japan
27	Planning your courses
28	International student support
30	Student profiles
31	Academic Consortium (IACSC)
32	Global Cooperation Institute for Sustainable Cities (GCI)
34	Campus life
36	Visiting YCU
37	Key contacts and acknowledgements

Preface

YCU is a regional hub for education, research and medical care. We make every effort to provide fulfilling learning opportunities, to contribute to the community and to live up to the trust and expectations of the citizens of Yokohama. I encourage our students to realize that all the academic activities taking place at YCU have a real impact on society both at the local and global levels.

Our curriculum fosters in students a global sensibility and a greater awareness of the diversity of our world. We are determined to intensify exchange with our academic partners and strengthen ties with the City of Yokohama and other overseas institutions. I hope that, together, we can build an academic network that reaches all corners of the world.



Yoshinobu Kubota
President

YCU's seal, symbol mark and logo



YCU's seal was adopted around the 1940s, and is believed to be comprised of 3 seagulls surrounding the traditional character for "school".



The YCU symbol mark was adopted in April 2005, to commemorate YCU's inauguration as a public university corporation.



The YCU logo was adopted to further promote the university's identification with the acronym "YCU" in Japan, where the university is more colloquially known as "Shidai" or "Yokoichi".

Facts and Figures

YOKOHAMA

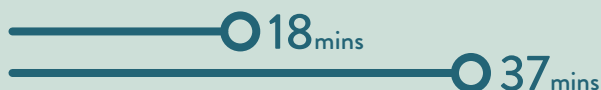
was voted no.1 as the “best city/neighbourhood to live in (within the Kanto region)” in 2018.

* SUUMO 2018年「住みたい街ランキング」by Recruit Sumai Company, Ltd.



We have a 6:4 student ratio of females to males.

* as of May 2018



Our main campus is only 18 minutes away from Yokohama Station and 37 minutes away from Tokyo (Shinagawa Station) on the Keikyū (Keihin Kyūkō) Line.

*using the Limited Express trains



90% of our students are actively involved in clubs, societies and/or volunteer activities.

YCU has 76 sports-related teams/clubs, and 74 arts/culture clubs (as of May 2018). The Volunteer Support Office helps our students discover volunteer opportunities in Japan, while our Office of International Affairs coordinates volunteering overseas.



98.9%

of our International College of Arts & Sciences* graduates are employed or in further study upon graduation.

* the International College of Arts & Sciences is the predecessor to the School of International Liberal Arts, School of Economics & Business Administration, and the School of Science
** all data are as of May 2018



We have a

97.7%

passing rate for the Japan Board of Medicine Certification (医師国家試験).



We have a

100%

passing rate for the National Nursing Examination (看護師国家試験).



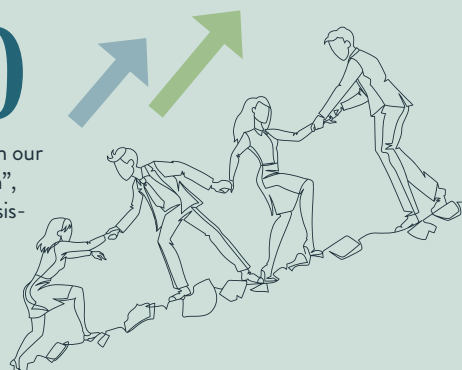
of our students actively seek support and guidance from our Career Support Center in a year. That's about a quarter of our student body!

* as of 2017

2770

alumni have registered with our “Career Supporter System”, in which alumni provide assistance and guidance to current students in their job-hunting activities.

* as of March 2019



Our students can participate in international volunteer programs (provided by the Council for International Educational Exchange) in over

35

countries, from anywhere between a week to a month over summer and/or spring break.

YCU was ranked **3rd** among universities in Japan

* Times Higher Education Japan University Rankings 2019

横浜

YOKOHAMA



Yokohama is a vibrant port city loved by its citizens, open and welcoming to visitors, and famous for its easy-going atmosphere. The largest municipality in Japan, Yokohama is conveniently located in the center of the country — with easy access to other major cities in Japan by bullet train and less than 30 minutes from Haneda Airport for direct international flights to most areas. It is also a key venue for world-level sports competitions as well as international conventions.

As the first port in Japan to open to the world in 1859, Yokohama is a place where the new and the old come together in harmony. While the city is at the cutting edge of technology, it also cherishes its many historic assets. It offers the dynamism and diversity of city life, but also havens of serenity with more quiet locales such as its traditional Japanese garden. In addition, Yokohama is dedicated to preserving urban green spaces and is a pioneer of citywide eco-friendly efforts.





Yokohama Port Opening Memorial Hall (7)



Minato Mirai 21 (1)



Sankeien Garden (2)



Nissan Stadium (8)

Explore the Yokohama region



1. Minato Mirai 21

- Landmark Tower
- Red Brick Warehouses
- Nippon Maru and Yokohama Port Museum
- Cup Noodles Museum
- Yokohama Museum of Art
- Cosmo World (amusement park)

2. Sankeien Garden

3. Chinatown

- Kanteibyō shrine

4. Yamashita Park

- Hikawa Maru

5. Yokohama Stadium

6. Osanbashi Pier

7. Yokohama Port Opening Memorial Hall

8. Shin-Yokohama

- Shin-Yokohama station (shinkansen bullet train)
- Nissan Stadium (Rugby World Cup 2019 venue)
- Ramen Museum
- Yokohama Arena

9. Yamate and Motomachi

- The Bluff District
- Harbor View Park
- Motomachi shopping street

10. Hakkeijima Sea Paradise

11. Shomyoji Temple

Studying in Yokohama



Yokohama for Business Studies

Ever since the port of Yokohama opened to international trade, the city has welcomed and built strong ties with foreign firms. It is now home to industry leaders such as Nissan Motor, while also being a stronghold of SMEs — which make up 90% of Yokohama's business scene and strengthen the local economy.


On top of being at the forefront of the biotechnology industry among other emerging fields, the city is a pioneer in promoting female empowerment in Japan and in finding solutions for pressing global issues such as environmental problems. Yokohama was selected by the national government as a strategic base in building a sustainable socio-economic structure in Japan.

Yokohama for Urban Studies

The city has overcome many hardships caused by war and, in the 1960s, rapid population growth. Now the 2nd most populous agglomeration in Japan, the expertise Yokohama has accumulated is a competitive asset in fields including urban design, waste management, water infrastructures, and ports and harbors.

Yokohama actively participates in networks of cities around the world and has earned international recognition for its sustainable and creative urban development. The city supports artists, designers and architects in making use of historical buildings and locations. It also promotes regional and community-based efforts in solving various environmental and social issues.



A group of six students are gathered outdoors in front of a light blue building with white-framed windows. One student, a man in a red jacket, is standing next to a red bicycle. Another student, a man in a dark jacket, is standing with his hands on his hips. A woman in a denim jacket is sitting on a concrete ledge, laughing. A man in a dark jacket and cap is sitting on the ledge, facing away from the camera. A man in a grey hoodie is standing on the right. A woman is sitting on the grass in the foreground, looking towards the group. The scene is bright and sunny, with green grass in the foreground and a young tree with green leaves on the left.

“Class sizes are small with a low student-teacher ratio. This also makes it easy to connect with Japanese students, which is also a great encouragement to learn some Japanese during the exchange.”

- Carla Harold, Exchange Student

Academics Overview

Yokohama City University has five undergraduate schools. In 2018, YCU became the first university within the metropolitan area to have an undergraduate school specializing in the field of data science, and from 2019, YCU's International School of Arts and Sciences will be divided into the School of International Liberal Arts, School of Economics and Business Administration and School of Science. YCU also has five graduate schools which are strongly linked to our several research centers.

Undergraduate Schools

School	Department	Degree Awarded
School of International Liberal Arts	Department of International Liberal Arts	Bachelor of Liberal Arts
School of Economics and Business Administration	Department of Economics and Business Administration	<ul style="list-style-type: none"> Bachelor of Economics Bachelor of Business Administration
School of Science	Department of Science	Bachelor of Science
School of Data Science	Department of Data Science	Bachelor of Data Science
School of Medicine	Medical Course	Bachelor of Medicine
	Nursing Course	Bachelor of Nursing

Graduate Schools

School	Department
Graduate School of Urban Social and Cultural Studies	Department of Urban Social and Cultural Studies
Graduate School of International Management	Department of International Management
Graduate School of Nanobioscience	Department of Materials System Science
	Department of Life and Environmental System Science
Graduate School of Medical Life Science	Department of Medical Life Science
Graduate School of Medicine	Department of Medicine
	Department of Nursing

Undergraduate Schools

School of International Liberal Arts

Multifaceted, critical thinking and a high level of language proficiency are essential for identifying and solving issues in the increasingly globalised environment. Students will be expected to develop skills for an active role in society through the following curriculum; Liberal Arts for acquiring logical, critical thinking supported by knowledge in specialized fields and Urban Science studies for tackling issues among global cities and local regions.

Why study Liberal Arts at YCU?

Broaden your perspectives through the study of liberal arts and urban science

Students will learn to acquire and deepen their knowledge in liberal arts, critical thinking, language skills and problem-solving skills. The school has created a curriculum in the field of liberal arts and urban science through seminars in small groups for developing the students' expertise and research topics.

Liberal Arts studies

Building on fields in the humanities and social sciences ranging from philosophy to sports science, psychology, literature, linguistics, historiography, sociology, legal studies, international affairs and regional studies, the curriculum offers students the opportunity to study in various academic fields and cultivate rich cultural understanding to grasp the nature of society, culture and human activities.

Urban Science studies

Based on wide-ranging knowledge in regional science, urban planning and spatial science, the curriculum is designed to train students to apply their knowledge and education at various levels to everything from global challenges to urban and regional issues.

Recommended for those who

Liberal Arts

- wish to contribute to mutual understanding among people around the globe
- want to understand language from a cultural or historical perspective
- are interested in learning about the human mind, development and growth

Urban Science

- want to become more involved with communities, urban planning and design
- aspire to contribute to solving urban and regional issues

Degree Awarded

- Bachelor of Liberal Arts (BLA)

Duration

4 years

Courses in English

Some courses available

Globally competitive players need to explore issues on a broad, multicultural perspective and find solutions through a clear intellect and good communication skills; foreign language proficiency, insight from diverse socio-cultural backgrounds, understanding of different cultures and the ability to pro-actively contribute to society based on solid reasoning. The school also offers opportunities to become exposed to diverse cultures, such as through overseas study programs, fieldwork, internships, volunteering, etc. We support those who actively seek to share their vision with people from different societies and cultures around the globe.



Professor
Kyoko Satoh

Dean,
School of International
Liberal Arts



Undergraduate Schools

School of Economics and Business Administration

Students will develop business management skills necessary for working at global companies, capabilities for planning and carrying out new business plans, and understanding of advanced theories and practices. The School of Economics and Business Administration aims to nurture professionals who are active in a wide range of private and public sectors, and are equipped with a high level of proficiency in English.

Why study Economics and Business Administration at YCU?

Experience learn-by-doing in Yokohama and in corporations, while learning to write business plans and proposals with a cross-disciplinary approach

Making the most of our relationship with the city of Yokohama, the university provides training in business plan proposals, working with the local government and corporations. The training integrates humanities and science in collaboration with the School of Data Science and the School of Medicine.

Short-term study abroad programs and summer seminars for promoting international experience

Up to 100 students per year are encouraged to participate in summer seminars overseas and study abroad programs to gain experience outside Japan. We particularly encourage sophomores to actively involve themselves in the study abroad programs or seminars from June to September. Besides that, international students are also invited to interact with the local students in the summer programs.

Nurture practical skills through work placements abroad

We offer opportunities for internships in international companies and institutions to gain global perspectives and management skills vital for conducting business.

Recommended for those who

- are interested in learning methods for planning a business and starting a company
- want to acquire business management skills for working in global corporations
- aspired to become a Certified Public Accountant (CPA), tax accountant, etc.
- would like to focus on financial agencies' activities in the Bank of Japan's monetary policy
- are considering potential career paths at private firms, public agencies, local governments, etc.

Degrees Awarded

- Bachelor of Economics (BEcon)
- Bachelor of Business Administration (BBA)

Duration

4 years

Courses in English

Some courses available

YCU's origins can be traced back to the Yokohama School of Commerce, which was founded in 1882 when the port of Yokohama was the center of trade in Japan. Students at YCU learn problem-solving management skills while actively engaging in business, based on our principle 'developing talent through relationships'. We capitalize on our broad network of alumni currently active in the business world, and our location in the one of the major global commercial hubs in Japan.



Professor
Masatoshi Osawa

Dean,
School of Economics and
Business Administration



Undergraduate Schools

School of Science

By studying the basics of natural science in the fields of physics, chemistry and biology, we nurture students with the ability to understand and explore the phenomena of life at a cellular and molecular level, and take an integrated approach across the fields of medicine, engineering and agriculture.

Why study Science at YCU?

Science and Mathematics Master Training Program lets you conduct research activities in the first year

First year students have the freedom to select a program for independent study under supervisors. The program is designed to encourage the students to output their research findings in nationwide competitions such as 'Science Inter-College' and offers full support in their research activities right upon entry.

Fundamental knowledge in physics, chemistry and biology

In addition to Practical English and liberal arts seminars, first-year students are required to acquire fundamental knowledge and skills in science for basic experiments (physics, chemistry and biology). This is to ensure the students can pursue their field of interest and research in their second year.

International Retreat Program for developing a global mindset

All students will be affiliated with their laboratory project after the second semester in the third year. Those in their fourth year will be eligible to take graduate classes in advance, and to conduct research consistent with the Graduate School of Nanobioscience, as well as the Graduate School of Medical Life Science. By engaging in the International Retreat Program, students will get the opportunity to collaborate with foreign universities to communicate their views and share their research and findings with colleagues.

Recommended for those who

- have interests in the latest advancements in science and technology
- want to be involved in energy and environmental issues
- would like to deepen their understanding of natural phenomena to promote innovation
- want to understand the mechanism of life through a scientific perspective
- aspire to work & conduct research in the field of life science or medicine

Degrees Awarded

- Bachelor of Science (BSc)

Duration

4 years

Courses in English

Some courses available

Sciences today have become highly advanced and complex. While the school educates and trains students in natural phenomena, we need to apply a multifaceted approach in addition to biology; including physics, chemistry, the latest findings in nanotechnology and data science. Students will learn material and life sciences to explore and develop their expertise by taking a cross-disciplinary approach. This enables students to further understand the phenomena of life on cellular and individual levels via material science, molecular and atomic levels through the lens of physics and chemistry, and integrated research across the fields in medicine, engineering and agriculture.



Professor
Kazuteru Shinozaki, PhD
Dean,
School of Science



Undergraduate Schools

School of Data Science

The School of Data Science fosters human resources who can create new social values from such enormous data. Students will learn the fundamental knowledge of mathematics, statistics and information technology which are necessary to process and understand data, communication skills which are indispensable in society, the idea of creating innovation, and business abilities that are applicable in the next generation.

Why study Data Science at YCU?

Curriculum

Based on a study of relevant topics in mathematics, statistics, and computer science, including machine learning, data mining, data visualization and data management, we provide a fundamental understanding of the methods of data science. The curriculum also provides actual experience in front-line problems in a variety of application fields depending on each student's interest such as business sciences, medicinal sciences and so on.

Merging arts and sciences

In addition to data science specific subjects such as statistics and computer science, our curriculum offers a wide variety of subjects in applied fields such as politics, economics, finance, public affairs, life science and others offered as subjects by the university. Our students have the freedom to choose subjects that appeal to them academically, and can help build their future careers.

Emphasis on real-life situations

We conduct PBL (Project Based Learning) in classrooms and also in companies, as well as some other institutions, which can provide good opportunities to have a wealth of exercises to cultivate communication skills and problem discovery/solving abilities.

Recommended for those who

- want to pursue a career in the field of artificial intelligence (AI) as an engineer
- wish to discover social issues, and their corresponding solutions by analyzing big data
- value the power of communication, and wish to help contribute to society
- aspire to become practical and innovative business-people, who practice data driven decision making

Degrees Awarded

- Bachelor of Data Science (BDS)

Duration

4 years

Courses in English

Not Available

Along with the dramatic progress of information technology, various kinds of data are accumulating everywhere in society. It is required to find value from such data and to make rational and reasonable decisions based on the analysis of data. Because it is a changing society, we need a solid foundation that does not change in any case, and, of course, we need the ability to respond to change with flexible thinking that proceeds to create change for a new era. Life in the School of Data Science is a new opportunity that will be responsible for the next generation. Why don't you take the first step, and together let's make history!



Professor
Manabu Iwasaki, PhD
*Dean,
School of Data Science*



Undergraduate Schools

School of Medicine

YCU's School of Medicine is dedicated to the development of competent and compassionate medical professionals who understand the needs of local, national and global communities, and will advocate for their patients' health and well-being. Our students are also encouraged to pursue creative research in the fields of medicine, medical sciences and nursing in order to promote the prosperity of humanity by actively finding solutions to issues in health care. In order to accomplish these goals, the school strives to become one of Japan's leading medical schools, which serves as a center of learning that passes on knowledge and innovative technology concerning health care.

Medical Course

The Medical Course is 6 years long. In the course, the curriculum consists of "General Prerequisites" in the students' first year, and more specialised subjects from their second year onwards. In their first year, the students take liberal arts classes with students of other faculties to acquire general knowledge and problem-solving skills. From their second year, the curriculum has been designed based on MEXT's "Medical Education Model Core Curriculum". The curriculum aims to enhance communication and leadership skills, as well as develop knowledge about medicine and healthcare; while highlighting the importance of medical safety. Advanced courses will also focus on developing logical thinking skills.

Nursing Course

Our Nursing Course is meant to foster human resources who will be able to take initiatives to promote healthcare and welfare of the community, while keeping up with advanced medical care innovations. The curriculum covers every nursing procedure required in everyone's life-stages. Nursing students begin with the "General Prerequisites" course, whereby they take classes with students of other faculties, to develop a broader sense of values, and gradually learn specialised courses throughout their undergraduate studies, such as "Pediatric Nursing", "Elderly Nursing" and so forth.

Degrees Awarded

- Bachelor of Medicine (MD)
- Bachelor of Nursing (BN)

Duration

- Medical Course - 6 years
- Nursing Course - 4 years

As for our Medical Course, the success rate in the Japan Board of Medicine Certification is 97.7%, and we were ranked as the third best university among 80 medical schools in Japan (2018). With regard to the Nursing Course, the success rate in the National Nursing Examination is 100% (2018). Together with fostering professionals, we also put our emphasis on globalization. In collaboration with our valuable partners in the world, we are offering various opportunities for international exchange both in campus and abroad.



Professor
Munetaka Masuda,
MD, PhD
Dean,
School of Medicine

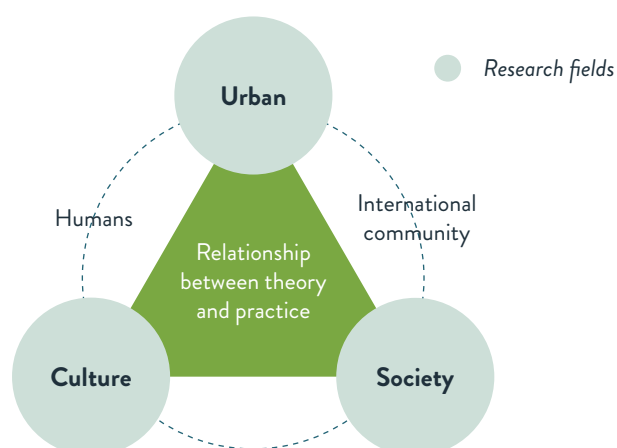




Graduate Schools

Graduate School of Urban Social and Cultural Studies

Building on a deep understanding of humanities, social science and natural science, the Graduate School of Urban Social and Cultural Studies proposes an interdisciplinary approach to solving the ever more complex challenges of our urban society. The school works closely with the community and, as a public institution of the city of Yokohama, benefits from collaboration with city agencies and international organizations. The goal of the Graduate School of Urban Social and Cultural Studies is to train students who can tackle the various problems that modern society presents us with - especially those that relate to the topic of urban society - in a practical manner and from a foundation of deep understanding of humans and culture.



Degrees Awarded

- Master of Arts (MA)
- Doctor of Philosophy (Arts)

Study in English

Depends on supervisor

Non-Degree Program

Available (research only)



Research fields

Urban

Africa studies, Architectural planning, China studies, Community design, Community resilience, Condominium management, Development aid, Development geography, Disaster management, Economic geography, Environmental psychology, Environmental studies, Geographic Information Systems (GIS), Housing policies, Housing policy, Management of living environment, Property management, Real estate sciences, Urban design, Urban environments for children, Urban geography, Urban planning, Urban planning, Urban studies, etc.

Culture

American literature, Applied ethics, Clinical psychology, Cultural anthropology, Culture of healing, Developmental psychology, Educational administration, Educational management, Educational psychology, Ethics, Ethnicity, Gender studies, Higher education, Iranian area studies, Islamic area studies, Japanese history, Mental health, Modern history of Iran, Multiculturalism, Phenomenological theory of humankind, Philosophical logic, Political history of pre-modern China, Psychoanalysis, Social psychology, Sociolinguistics, Western history, etc.

Society

Economic systems, Economics of living and welfare, Education for immigrant children in Japan, Global economics, Global governance, Global politics, Global public policy, International law, Local society and minorities, Media, Modern society, Social theory, Socioeconomic history of Thailand, Sociology of culture, Southeast Asian studies, Visual media and culture, etc.

Graduate Schools

Graduate School of International Management

The goal of the Graduate School of International Management is to foster in the students the ability to identify problems, find solutions and make presentations. Students gradually acquire expertise that will give them an edge in global fields. One characteristic of the school is that it offers a special research program in Service Science through which students conduct research on the service business, a sector that has been rising in importance, in a professional and scientific manner.

Master's Program

Our master's program seeks to develop students into COOs, CFOs, and CIOs who will support improvements to a company's future competitiveness and its overseas development from within the company, or the leaders of the staff of an international finance or overseas development division or of the staff of an organization or consulting company that offers this type of support to other companies.

Doctoral Program

Our doctoral program aims to develop students into individuals who can use innovative approaches to tackle unsolved problems faced by companies as they develop overseas.

Degrees Awarded

- Master of Arts (MA)
- Doctor of Philosophy (Arts)

Study in English

Available

Non-Degree Program

Available (research only)



Research fields

Business Administration

Business law, Corporate governance, e-Business management, Financial accounting, Financial management, Global human resource development, Global logistics, Global management, Global organizations, Global strategy, Global tax planning, Healthcare management, International accounting, International accounting, Management consulting, etc.

Economics

Economic theory, Financial intermediation, International macroeconomics and policy, International trade, Management of technology, Management science, Microeconomics, Public economics, Quantitative analysis, Taxation and economy, etc.

Graduate Schools

Graduate School of Nanobioscience

The Graduate School of Nanobioscience aims to contribute to the perpetual development of humanity by developing students into individuals who can further combine the fields of physics, chemistry, and life sciences and think of efficient solutions to the various problems facing human society from the perspective of the natural sciences.

Department of Materials System Science

This department teaches students to use experimental and computational science to elucidate nanosystems, including life systems, at the molecular, atomic, and subatomic levels and to comprehend environmental and energy problems scientifically. The department trains students to contribute to the perpetual development of humanity.

Department of Life and Environmental System Science

This department is centered around the study of genomes, which are the fundamental blueprints of life. By uncovering and teaching about the biomolecular structures and functions of animals, plants, and microorganisms that live in a variety of different environments, the department raises students into individuals who can contribute to solutions to various problems concerning areas such as food, health, and the environment.

Degrees Awarded

- Master of Science (MSc)
- Doctor of Philosophy (Science)

Study in English

Depends on supervisor

Non-Degree Program

Available (research only)



Research fields

Materials System Science

Bioorganic chemistry, Cluster science, Condensed matter physics, Electrodynamics, Inorganic chemistry, Inorganic photochemistry, Light/sensory information, Mass spectrometry, Materials science, Materials science, Natural products chemistry, Physical chemistry, Solid state physical chemistry, Solid state physics, Solid-earth geophysics, Surface material science, Surface science, Surface/nanostructure physics, Theoretical chemical physics, Theoretical condensed matter physics, etc.

Life and Environmental System Science

Biochemistry, Bioelectrochemistry, Biophysics, Chronobiology, Colloid surface chemistry, Deep-sea plankton ecology, Developmental biology, Endocrinology, Environmental microbiology, Environmental response, Enzymology, Extreme environment biology, Genome informatics, Glycobiology, Immunobiology, Molecular biology, Molecular toxicology, Plant developmental physiology, Plant epigenome science, Plant genetics and breeding, Plant genome science, Plant hormones, Plant molecular biology, Plant molecular genetics, Plant physiology, Protein chemistry, Regenerative biology, Reproductive biology, Soft matter science, etc.

Graduate Schools

Graduate School of Medical Life Science

The goal of the Graduate School of Medical Life Science is to establish biomedical science at the atomic and molecular level as a new field in biology. The aim of this is to equip students with research and development capabilities befitting the post-genome era. As such, the focus of the school's postgraduate education is on giving students a foundation in "quantitative and technical thought processes at atomic and molecular level" and the "capacity for application and development to medical sciences".

Research Groups

- Structural Biology Laboratory
- Cellular Systems Laboratory
- Functional Structure Biology Laboratory
- Intracellular Structure and Function Laboratory
- Drug Design Laboratory
- Nucleic Acid Science Laboratory
- Structural Epigenetics Laboratory
- Cellular and Molecular Epigenetics Laboratory
- Computational Life Science Laboratory
- Bioanalytical Sciences Laboratory
- Molecular and Cellular Biology Laboratory
- Immunobiology Laboratory
- Proteome Science Laboratory
- Functional Genomics Laboratory
- Molecular Medical Bioscience Laboratory
- Bioimaging Laboratory

Degrees Awarded

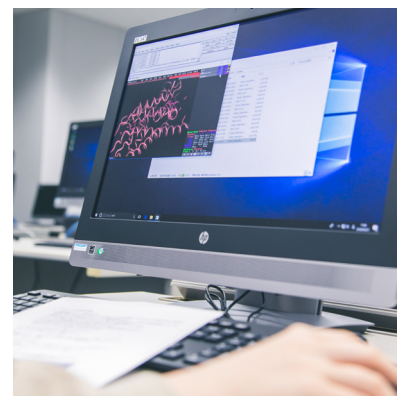
- Master of Science (MSc)
- Doctor of Philosophy (Science)

Study in English

Depends on supervisor

Non-Degree Program

Available (research only)



Research fields

Applied microbiology, Bacteriology, Biodiversity, Biological physics, Biological Science, Biomolecular chemistry, Biophysics, Cell biology, Chemical physics, Developmental biology, Endocrinology, Functional biochemistry, General medical chemistry, Metabolomics, Molecular biology, Molecular evolution, Mycology, Neurochemistry, Neuropharmacology, Neurophysiology, Nuclear magnetic resonance, Physical pharmacy, Physics, Post-translational modification, Protein structure, Proteomics, Soft matter physics, Spermatogenesis, Structural biochemistry, Structural biology, Systematics, Urology, etc.

Graduate Schools

Graduate School of Medicine

The Graduate School of Medicine aims to contribute to the development of society by nurturing students into individuals who can make valuable contributions to both local and global society and through innovative research. To accomplish these goals, the school strives to develop more advanced academic knowledge and practical skills from a foundation of medical and scientific knowledge and technology.

Department of Medicine

The Master's Degree Program is a two-year course, established for university graduates other than those in the School of Medicine Medical Course, who wish to pursue research in medicine and life sciences. The purpose is not to train clinical practitioners; the enrolled students come from a variety of academic backgrounds, including physics, pharmacology and engineering. On successfully completing the course, students advance to the Doctoral Degree Program, take up R&D posts in companies or research institutes, etc., or become active as high-level specialist professionals in hospitals.

The aim of the four-year Doctoral Degree Program is to equip graduates from the School of Medicine Medical Course (or, in other cases, a completer of the Master's Degree Program or the Doctoral Degree Stage I Program) with practical ability in high-level medical research, enabling them to contribute to the ceaseless advance of medicine. The Program covers a wide range of research fields, including genome and gene science, molecular and cell biology, neuroscience, immunology, cancer science, regenerative science and social sciences. This Program features collaborative graduate study with Yokohama National University, the Pharmaceuticals and Medical Devices Agency (PMDA), the National Institute of Radiological Sciences and RIKEN, to further advance our research.

Department of Nursing

YCU's Graduate School of Medicine's Nursing Department consists of a Master's (Master of Nursing) and a Doctoral (PhD Nursing) program. Our programs aim to nurture talented people who view issues from a wide perspective and can investigate the speciality of nursing, and who can reform nursing practice with their practical research capabilities. In our Master's program, students can choose between two pathways; the Special Research Course (10 specialised fields) and the Advanced Practice Nurse Course (6 specialised fields)*.

**The Advanced Practice Nurse Course is designed to prepare Certified Nurse Specialists (CNS) in the fields of Cancer Nursing, Gerontological Nursing, Infection Control Nursing, Child Health Nursing, and Psychiatric Mental Health Nursing, and Perianesthesia Nurse (PAN).*

In the Doctoral program, we aim to train nursing science researchers, nursing educators, and nurses who can excel in executive leadership and more advanced nursing. Among the 8 specialised fields that students can choose from include Nursing Care System Development, Health Support Nursing, Child Health and Development Nursing, and Community Health Care System and Nursing.

Degrees Awarded

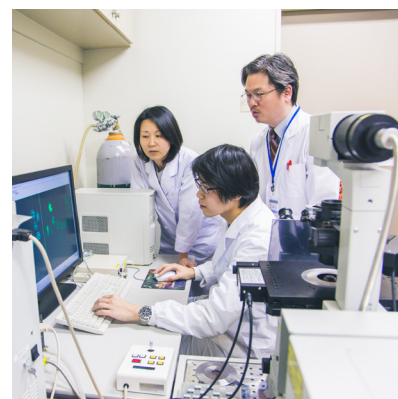
- Master of Medical Science (MMedSci)
- Doctor of Philosophy (Medical Science)
- Master of Nursing (MN)
- Doctor of Philosophy (Nursing)

Study in English

Depends on supervisor

Non-Degree Program

Available (research only)



Research Centers & Facilities

Advanced Medical Research Center (SENTANKEN)



The Advanced Medical Research Center (SENTANKEN) of YCU was established in 2006. The assignment of SENTANKEN is to facilitate advanced medical research associated with diseases such as cancer and lifestyle-related diseases. SENTANKEN is focused on basic researches in the field of genomics, proteomics and cellomics, as well as translational researches, which can fill the gap between basic and clinical researches, and promotes not only intramural collaboration but also between government, industry and academia.

Our goal is to make an attractive YCU that can contribute to the community by delivering the research outcomes of our basic and clinical researches promptly to the citizens of Yokohama and by connecting these activities for the revitalization of industries in Yokohama.

In December 2012, a new research building was constructed on YCU's Fukuura Campus. Then, in August 2015, the construction of an extension of the main building was completed. As of the year 2019, these centers are running : Genome Research Center, Proteome Research Center, Cellome Research Center, Animal Model Analysis Center, Epigenome Research Center, Communication Design Center, and Industry and Academia Collaboration Laboratories.



YCU Center for Novel and Exploratory Clinical Trials (Y-NEXT)



In April 2015, the YCU Center for Novel and Exploratory Clinical Trials (Y-NEXT) was opened to provide both facilities and infrastructure to accelerate translational researches and clinical trials. To promote clinical trials and clinical research in collaboration with regional healthcare facilities, we have appointed specialists including statistics experts, data managers, and clinical research coordinators with the support of the city of Yokohama.

The Kihara Institute for Biological Research (KIBR) originated as an institute established by Dr. Hitoshi Kihara, who led the world in promoting genomic concepts with a magnificent track record in genetics and the evolutionary study of wheat and higher plants. The traditions of the research institute were continued after it was subsequently put under the management of Yokohama City University, and its conversion to a public university marked the start of a new challenge as it plays the role expected of it in advancing life science through botanical research in the 21st Century. The KIBR has a store of genetic resources - about 6000 strains of wheat and 800 types of chili peppers - that are precious in both global and historical terms. The institute also develops plant science research that can only be conducted in the KIBR labs, such as growing crops that have wide-ranging environmental adaptability, or introducing unique functional genes into cultivated wheat and chili peppers.



Departments

The KIBR is anchored by three divisions focusing on genetic resources (germplasms), plant genomes, and applied plant genome; along with a new fourth division focusing on plant epigenomics starting in 2014.

Plant Genetic Resources

The KIBR has conserved important historical plant genetic resources and genetic experimental lines of wheat, which is one of the major crops along with rice and corn. The institute also has precious genetic resources of capsicum collected from its place of origin, Central America. From a wide range of genetic resources collected and conserved in a scientific manner, the Plant Genetic Resources division evaluates and selects the useful characteristics of a plant. By taking advantage of our research network with domestic and international agricultural institutions, the Plant Genetic Resources division successfully carry out targeted phenotyping and genotype research, in addition to improving education concerning plant germplasms that can be useful to society.

Plant Genome Science

The Plant Genome Science division have been interested in the gene regulation systems of complex genomes, such as wheat, in response to environmental stresses and developmental programs. The division has systematically conducted comparative and functional genomics on polyploid wheats. Due to the advancement of recent genome science, approaches to plant science have shifted from research on each gene to functional genomics on related gene networks. Taking these situations into account, the division is concentrating on the functional genomics of polyploid wheat as a model system.

Plant Biotechnology

Plant growth and development is strictly regulated by environmental signals. The Plant Biotechnology division takes advantage of a chemical biology approach to study how plant hormones regulate plant growth and development at the molecular level. The division also takes an advanced genomics approach to study the model plant *Arabidopsis* transcriptome.

Plant Epigenome Research

In angiosperm, one sperm cell fertilizes the egg cell to give rise to the embryo, and the other sperm cell fuses with the central cell to form the endosperm. In crop plants, the endosperm is a major part of the seed and provides major dietary calories for humans. During the endosperm formation, the role for the maternally - and paternally - derived genomes are not the same. The conflict of genome can be seen even in species of self-fertilized plants, including *Arabidopsis thaliana*. Therefore, it has been argued that epigenetic mechanisms in the female and male lineages are involved. The Plant Epigenome Research division studies these epigenetic mechanisms in *Arabidopsis* and rice.

Tsurumi Campus (Nuclear Magnetic Resonance facility)



Tsurumi Campus

The Tsurumi Campus was established in April 2001 as a graduate school partnership between YCU and RIKEN, which also operates within the campus grounds. The Tsurumi Campus functions as the central institution of the Keihin waterfront district research and development base known as the Yokohama Science Frontier, and has gained worldwide renown as a pioneer in the life sciences illuminating the mysteries of life at the atomic and molecular levels.



NMR Facility

Nuclear magnetic resonance, NMR, is an outstanding research tool that can observe organic compounds, proteins, nucleic acids, and cells nondestructively at an atomic level. YCU's Tsurumi campus possesses superconducting NMR magnets with field strengths of 500, 600, 700, 800, and 950 MHz.

Among them, 950 MHz-NMR has demonstrated the world's top level sensitivity and is thus designed to detect chemical substances separated by high performance liquid chromatography, HPLC, in real time. As a result, trace amounts of metabolites and substances are identified before they are degraded. These machines also allow researchers to analyze the three-dimensional structures, dynamics, and catalytic actions of larger biological proteins, enabling to push forward researches at the forefront.

In addition to elucidating new biological phenomena, information obtained from NMR analyses can be utilized in a wide variety of ways, such as investigating the causes of diseases related to proteins, drug discovery, and development of functional foods, etc. The 950 MHz-NMR analyzes not only solution-state samples but also solid-state samples such as materials and amyloids, the cause of causes of neurodegenerative diseases (Several kinds of diseases are known as being caused by amyloids. Amyloids refer to as the general state in which proteins are aggregated). All machines are widely available to students and researchers from other universities and companies.



Hospitals

Yokohama City University Hospital



With 28 departments, the YCU Hospital is actively involved in research in clinical medicine, including efforts to realize 'translational research' to be applied to basic prevention, diagnosis, and treatment of diseases. The YCU Hospital is the only Specific Function Hospital in Yokohama.



BEDS

674

with a 85.8%
occupancy rate



OUTPATIENTS

471,039

per year



HOSPITALIZED
PATIENTS

203,948

per year

Departments

Anesthesiology, Breast and Thyroid Surgery, Breast Surgery, Cardiology, Cardiovascular Surgery and Pediatric Cardiology, Child Psychiatry, Dermatology, Diabetes & Endocrinology, Diagnostic Pathology, Division of Medical Oncology, Gastroenterological Surgery, Gastroenterology, Gastrointestinal Surgery, Hematology, Rheumatology and Infectious Diseases, Nephrology & Hypertension, Neurology, Neurosurgery, Obstetrics & Gynecology, Ophthalmology, Oral and Maxillofacial Surgery, Orthopedic Surgery, Otolaryngology, Pediatrics, Plastic and Reconstructive Surgery, Psychiatry, Pulmonary Medicine, Radiology, Rehabilitation Medicine, Stroke Medicine, Thoracic surgery, Urology

Yokohama City University Medical Center



With 10 disease-specific centers and 20 departments, the YCU Medical Center provides acute-stage medical care that requires a high level of technique as a core hospital with tertiary emergency medical care, converging a wide range of necessities.



BEDS

726

with a 88.2%
occupancy rate



OUTPATIENTS

487,618

per year



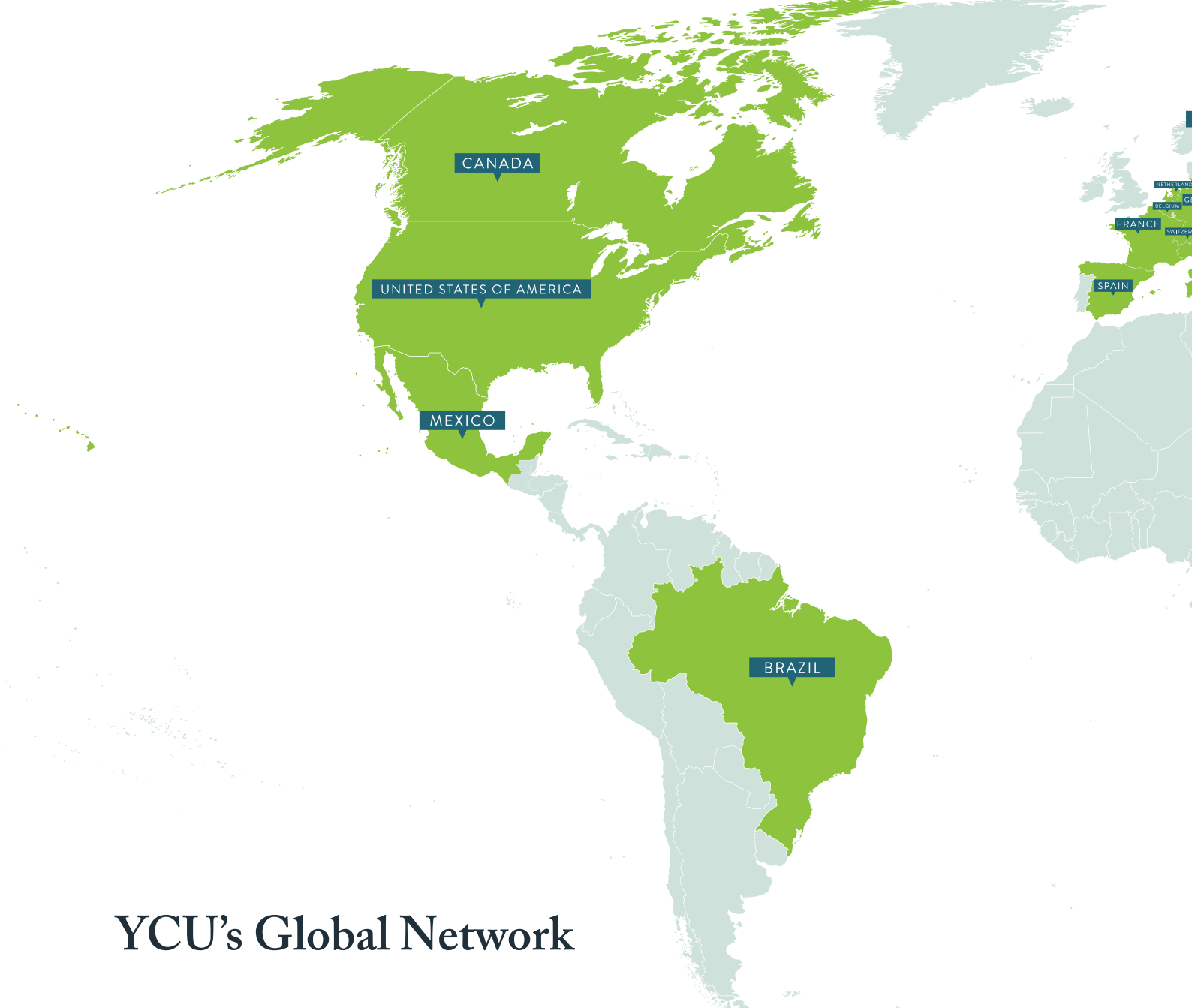
HOSPITALIZED
PATIENTS

238,382

per year

Departments

Advanced Critical Care and Emergency Center, Anesthesiology, Breast and Thyroid Surgery, Cardiovascular Center, Children's Medical Center, Children's Medical Center, Dermatology, Division of Nephrology and Hypertension, Diagnostic Pathology, Endocrinology Diabetes and Metabolism, Gastroenterological Center, General Internal Medicine, Gynecology, Hematology, Inflammatory Bowel Disease Center, Laboratory Medicine, Neurology (medicine), Neurosurgery, Ophthalmology, Oral and Maxillofacial Surgery/Orthodontics, Orthopedics, Otorhinolaryngology, Perinatal Center, Psychiatric Center, Physical Medicine and Rehabilitation, Plastic and Reconstructive Surgery, Radiation Oncology, Respiratory Disease Center, Rheumatic Diseases Center, Urology and Renal Transplantation



YCU's Global Network

Africa

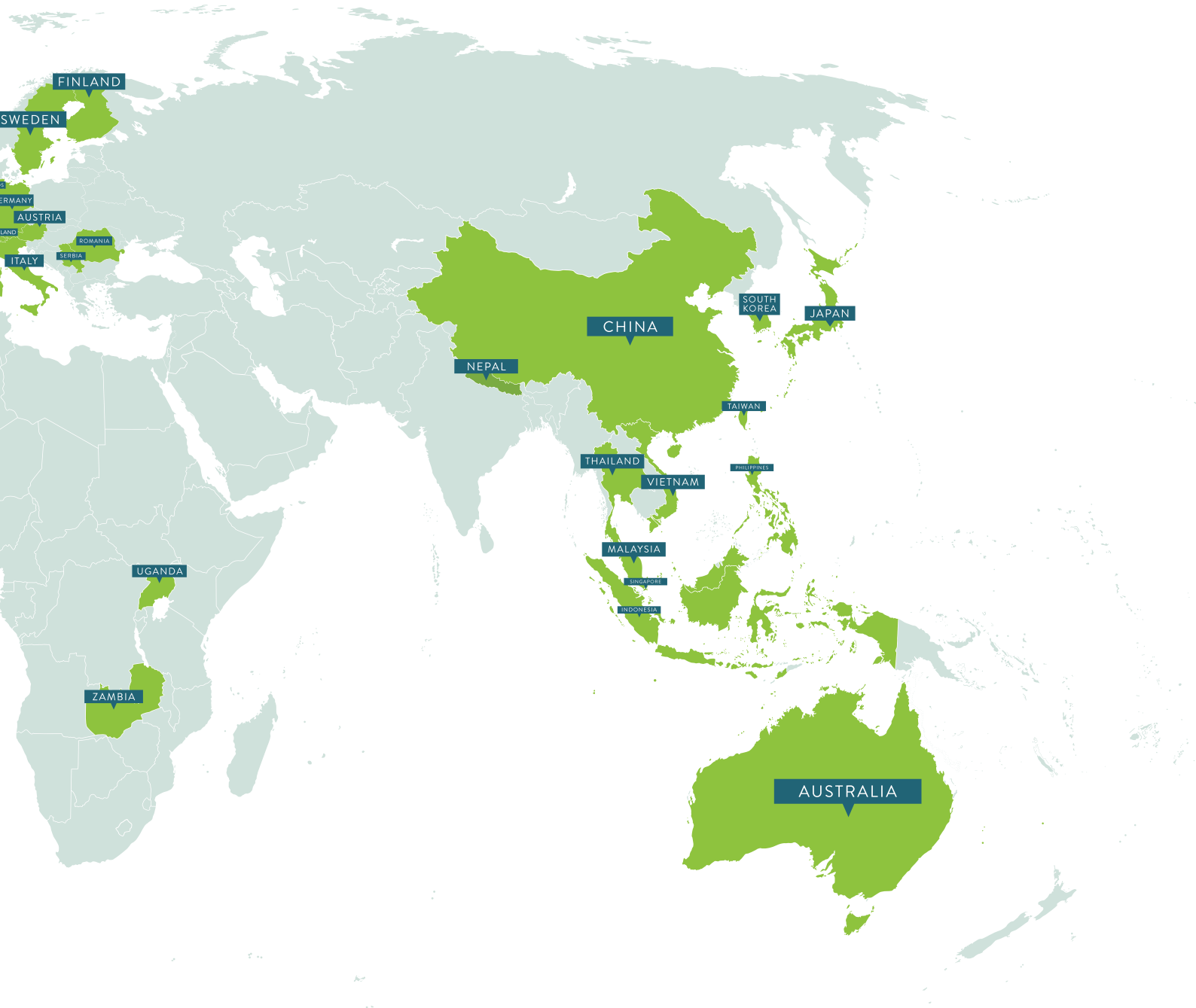
- Uganda • Makerere University
- Zambia • University of Zambia

Americas

- Brazil • Federal University of Rio Grande do Sul
- Canada • University of British Columbia
• University of Manitoba
• University of Montreal
- Mexico • Universidad de las Américas Puebla
- USA • La Jolla Institute For Allergy and Immunology
• Sanford Burnham Prebys Medical Discovery Institute
• Scripps Institute of Oceanography
• Temple University
• University of Texas MD Anderson Cancer Center
• University of California, Irvine
• University of California San Diego

Asia

- China • Beijing Normal University
• Shanghai Jiao Tong University
• Shanghai Normal University
- Indonesia • Hasanuddin University
- Malaysia • Universiti Sains Malaysia
- Nepal • Khwopa Engineering College
• Tribhuvan University
- Philippines • University of the Philippines
- South Korea • Gwangju Institute of Science and Technology
• Incheon National University
• Korea University Sejong Campus
• Pohang University of Science and Technology
• Semyung University
• Seoul National University
• Soomkyung Women's University
- Singapore • National University of Singapore



- Taiwan**
- National Chengchi University
 - National Formosa University
 - National Taiwan Normal University
 - Tunghai University

- Thailand**
- Chiang Mai University
 - Kasetsart University
 - Thammasat University

- Vietnam**
- Foreign Trade University
 - Vietnam National University, Ho Chi Minh City

Europe

- Austria**
- University of Vienna

- Belgium**
- Catholic University of Leuven

- Finland**
- University of Oulu, Oulu Business School

- France**
- Assistance publique - Hôpitaux de Paris (AP-HP)
 - Jean Moulin University Lyon III
 - Paris Descartes University

- Germany**
- Goethe University Frankfurt
 - University of Munich

- Italy**
- Ca' Foscari University of Venice

- Netherlands**
- Utrecht University Summer School

- Romania**
- University of Bucharest

- Serbia**
- University of Belgrade

- Spain**
- Complutense University of Madrid
 - University of Navarra
 - University of Santiago de Compostela

- Sweden**
- Halmstad University
 - Örebro University, School of Business

- Switzerland**
- University of Zurich

Oceania

- Australia**
- Deakin University

International Exchange



“[My Japanese language teacher] is so patient with every student; she is always willing to help us solve not just language problems but also daily life issues.”

Most of the Japanese students and teachers are very kind to foreign students. For example, people in the tea ceremony club, the club that I participate in YCU, are very friendly to me that there seemed to be no gap among us. It's really a good way to learn lots of Japanese culture. Thereafter, I recommend students to attend the club activity in YCU. Moreover, the Japanese language teacher is patient with every student, and she is always willing to help us solve not just language problems but also daily life issues.

Lee, Ming-Li

Tunghai University, Taiwan (ROC)



Study in Japanese

For students who are able and willing to study in Japanese-language conducted courses, a wide range of courses are available. The following online syllabi system can be used to search for courses.

<https://cmwebsv1.yokohama-cu.ac.jp/campusweb/slbsskgr.do>

Language Requirements

JLPT N2 or higher is desirable for students who wish to enrol in classes whereby the medium of instruction is Japanese. However, considerations can be made depending on recommendations from the student's home university. For those who wish to enrol in the Japanese Language classes, it is advisable for the student to have mastered beginner to lower-intermediate level Japanese (JLPT N5 to N3).



Study the Japanese Language

Students with beginner- to advanced- level Japanese proficiency who are interested in studying the Japanese language further during their time at YCU may choose the courses they are interested in from the list below.

Course Name	Level	Credit
Basic Japanese 1	Beginner 1	2
Basic Japanese 2	Beginner 1	2
Japanese 1	Beginner 2 (JLPT N4)	2
Japanese 2	Intermediate (JLPT N3)	2
Japanese 3	Advanced (JLPT N2-N1)	2
Practical Japanese (Writing A)	Intermediate - Advanced (JLPT N3-N1)	1
Practical Japanese (Writing B)		1
Practical Japanese (Writing C)		1
Practical Japanese (Speaking A)	Intermediate - Advanced (JLPT N3-N1)	1
Practical Japanese (Speaking B)		1
Practical Japanese (Speaking C)		1
Practical Japanese (Academic Japanese A)	Advanced (JLPT N2-N1)	1
Practical Japanese (Academic Japanese B)		1
Practical Japanese (Career Design for International Students A)		1
Practical Japanese (Career Design for International Students B)		1

In the Japanese language classes, we did not just learn Japanese, but also participated in activities such as making videos and presenting them to our Japanese peers, or reading and discussing current issues in Japan. Besides, the Japanese teachers are always ready to answer our questions, and teach us in detail, so we don't have to worry about our Japanese language abilities.

Kim Ji-Yun
Exchange Student
South Korea



YCU offers a number of courses in English. The university is relatively small in size, but this also brings advantages. Class sizes are small with a low student- teacher ratio. This also makes it easy to connect with Japanese students, which is also a great encouragement to learn some Japanese during the exchange.

Carla Harold
Exchange Student
Austria



Study in English in Japan

Spring Term

ACC20600	Introductory Accounting I
ACC20900	Introduction to IFRSs
ACC29800	Topics in Accounting A (Intensive)
ACC29900	Topics in Accounting B (Intensive)
ACC32200	Fundamentals of Investments
BIO34100	Molecular Toxicology
BUS22500	Global Organization Theory
BUS36200	Summer Program (Intensive)
BUS37600	Global Service Management
BUS37700	International Business I
CLE10150	Education in the World
ECO29600	Topics in Economics D (Intensive)
ECO29700	Topics in Economics C (Intensive)
ECO29800	Topics in Economics B (Intensive)
ECO29900	Topics in Economics A (Intensive)
ECO34100	Game Theory and Industrial Organization I
ECO39100	Sustainable Urban Development
EDU39100	Educational Sociology
ENV39100	Sustainable Urban Development (Intensive)
ILW30100	International Law A
INT21100	Global Politics
INT21200	Global Economics
INT29000	Technology and Society
INT29900	Politics and Society in Asia
INT31100	Global Peace
LIN11150	English Linguistics and Philology A
LIN39100	Language Education in Asia
LIT30100	Literature in English A
LIT31200	Japanese Literature in English A
LIT33400	Explication of American Literary Text A
PBL11850	Japan Studies: Youth Cultures
PBL11950	History of Modern Japan
PHY24100	Thermodynamics
PSY13150	Topics in Modern Psychopathology
SCI39100	Scientific Writing in English
SEM11350	Research about Japan by Foreigners
SEM11550	Comparing Education in the World
SEM11650	Japan from Foreigners' View A
SOC29200	Welfare and Employment in Japan
UCP29100	Building Sustainable Communities in Japan

Fall Term

ACC20700	Introductory Accounting II
ACC20800	Intermediate Accounting
ACC32300	Basics of Corporate Analysis and Valuation
BUS22200	Global Business Strategy
BUS22300	Global Innovation Management
BUS22400	Global Business Administration (Intensive)
BUS36100	Public Management
BUS37300	Global Leadership
BUS37400	Global Human Resource Development
BUS37500	Global Marketing
BUS37800	International Business II
BUS37900	Japanese Industry
BUS38000	Global Management in Japanese Companies
CUL13150	Understanding American and British Culture Aa
CUL13151	Understanding American and British Culture Ab
CUL13250	Understanding American and British Culture Ba
CUL13251	Understanding American and British Culture Bb
CUL34100	European Culture in English
DEV21100	Social Development
ECO29300	Advanced Topics in Economics I
ECO29400	Advanced Topics in Economics II
ECO30900	Topics in Macroeconomics
ECO34200	Game Theory and Industrial Organization II
ECO40900	Advanced Topics in Macroeconomics
ECO41700	Economic Analysis III
ECO41800	Economic Analysis I
ECO41900	Economic Analysis II
EDU39200	International Education
HIS39100	Religions in Japanese Culture
ILW30200	International Law B
INT27100	Overseas Fieldwork B (United Nations) (Intensive)
INT29500	Japanese Foreign Policy A
INT30300	Global Issues
LIN20100	General Linguistics
LIN39200	Practice in Language Education
LIT30200	Literature in English B
LIT31300	Japanese Literature in English B
LIT33500	Explication of American Literary Text B
LIT34600	Elements of Fiction
PBL10450	Risk Management ^{*1}
PBL10550	Japanese Globalization in Comparative Context ^{*1}
PSY10350	Introduction to Psychology
PUP23100	Global Public Policy
SEM11651	Japan from Foreigners' View B
SEM11750	Global Communications
SOC39100	Japanese Pragmatics
SOC39200	Language in Japanese Society

Language Requirements

If the student is not a native English speaker, we will require the student to show that they have an adequate knowledge of the English language, should they wish to enrol in classes conducted in English. The minimum requirement is a TOEFL iBT 61 or equivalent.

^{*1} Project Based Learning Course

Planning Your Courses

Credit System

One Japanese credit represents 45 hours of study. There is no specific “full work load” for exchange students, but we advise international students to take at least 10 - 12 credits (450 - 540 hours) per semester to maintain their “student” status of residence in Japan. The maximum number of credits a student can take in one semester is 24 (1080 hours).

Academic Calendar & Class Period

Spring Term April 1st, 2019 - September 21st, 2019
Fall Term September 22nd, 2019 - March 31st, 2020

	Hakkei / Tsurumi / Maioka campus		Fukuura campus			
	Grad. Schools	Undergraduate ^{*1}	School of Medicine Nursing Course	School of Medicine Medical Course ^{*2}	GS of Medicine Dept. of Medicine	GS of Medicine Dept. of Nursing
1 時限	08:50 - 10:20					
2 時限	10:30 - 12:00					
3 時限	12:50 - 14:20					
4 時限	14:30 - 16:00					
5 時限	16:10 - 17:40					
6 時限	17:50 - 19:20				17:50 - 19:20	
7 時限	19:30 - 21:00					19:30 - 21:00

時限 *jigen* = (class) period

*1 All undergraduate schools besides the School of Medicine

*2 Applicable to first-year students only

Grading System

Grade	Evaluation	GPA
90 - 100%	SA (Excellent)	4.0
80 - 89%	A (Very Good)	3.0
70 - 79%	B (Good)	2.0
60 - 69%	C (Sufficient)	1.0
59% and below	D (Fail)	0.0



International Student Support



Provision of pre-departure information

Prior to the arrival of international students, we send them information to make the transition to Japan as smooth as possible. We coordinate the arrival of each student and provide details on the necessary visa, available accommodations, Japan's National Health Insurance, mobile phones, Internet, and so forth.

Orientation for new international students

We hold orientations before the start of each semester in which we provide details on registration, on the services available at YCU, and on life in general in Yokohama.

Tutor program

Every new international student is matched with a peer. Tutors are coached to provide assistance at university. Of

course, the International Affairs Team is never far behind to help with more difficult situations.

Information on YCU's Student Health Center

Maintaining a healthy mind and body is essential to have a fulfilling student life. That is why we encourage students to take full advantage of the Student Health Center. There is always a nurse at the center who can administer first-aid treatment for open wounds or conduct general medical examinations and consultations.

Japanese language courses

YCU offers a wide range of Japanese language courses. For those with no Japanese language skills, learning the basics can be very useful for everyday life in Japan, while those who have a head start on the road to fluency will appreciate the intermediate and more advanced levels we also propose. (Please refer to page 24 for details)



Assistance with housing matters

Assistance in finding affordable accommodation will be provided to exchange students. Our international students will either be placed in the Yokohama International Student House or YCU's International Dormitory (shared house). In some cases, YCU can also introduce the students to real estate companies which specialise in accommodating international students.

Estimated monthly living costs in Yokohama

Rent	JPY 50,000
Utility costs	JPY 10,000
Food expenses	JPY 30,000
Health insurance	JPY 1,500
Leisure/sport	JPY 5,000
Mobile bill	JPY 4,000
Books/stationery	JPY 5,000

Career development

YCU has received a 5-year-period grant for the "International Student Career Development Program" from the Japanese government in 2017. The main goal of the program is to provide career development support to international students in terms of Japanese language education, job-hunting support as well as internship placements.

Through the program, our international students have access to Japanese language programs tailored to help them with job-hunting, lectures or seminars on Japanese work culture, visits from various company representatives, and internship placements in various companies within the metropolitan area.

Our Career Support Center also provides one-on-one career counselling to help our international students discover or pursue the path that they have interests in, and then tailor their career development plans accordingly.

Exchange Student
Stefan Mueller
University of Vienna
Austria



I enjoyed my time at YCU from the first day when I was greeted by the friendly staff of the international office. We got everything explained to us in great detail and felt cared for every minute. The tutors were also very happy to help with everything we asked for, from buying train tickets to questions about our visa.

The year at YCU opened more opportunities to me than I could have ever expected. From finding one of my best friends at the Taekwondo club to meeting interesting professors from different nationalities and fields of expertise, learning a new language like Korean at the diverse language courses at the university or meet interesting people coming to YCU from all over the world. The year in Japan was definitely life-changing and I would come again any second!



Tutor
Natsuki Rokudo
Yokohama City University
Japan

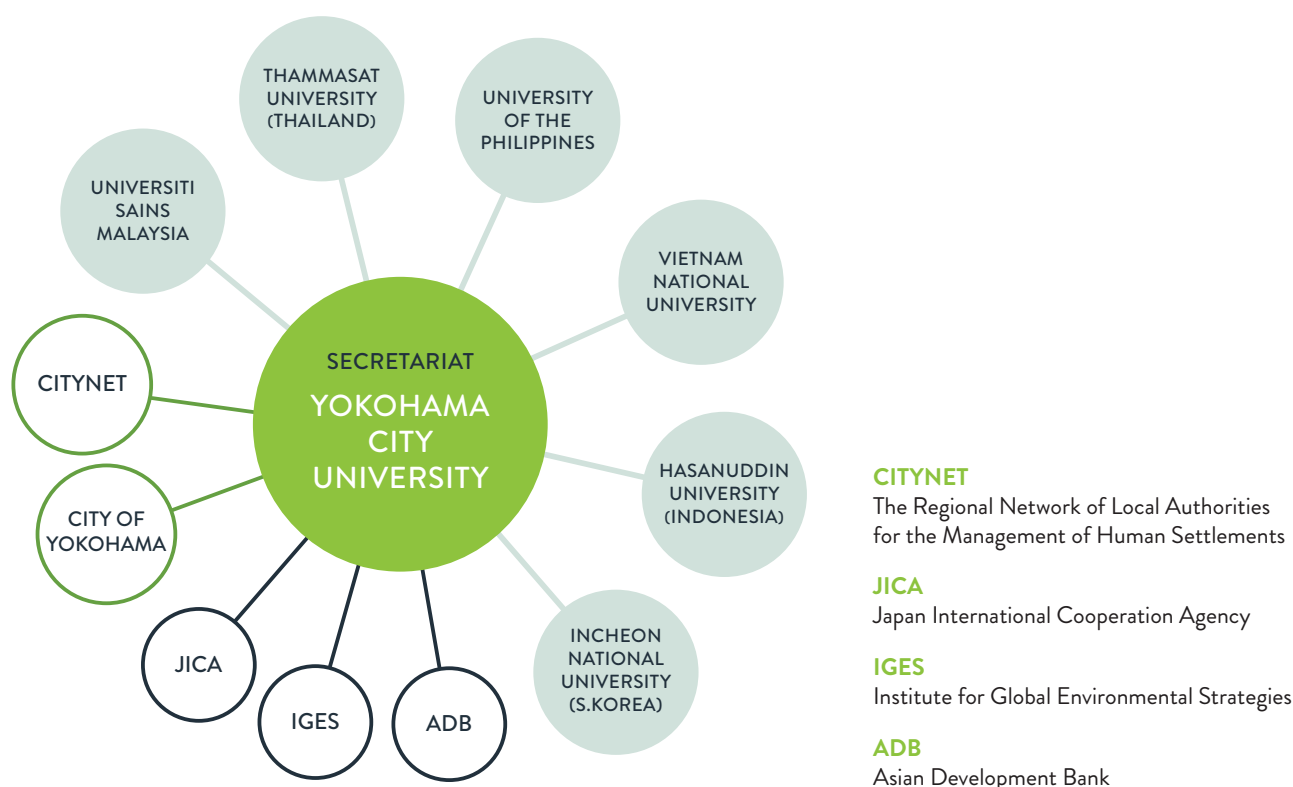


YCU gave me chances to tutor students from Italy and China. The tutor system provided me opportunities to experience different cultures and have foreign friends while being in Japan. I know studying abroad is not always easy, so I was glad to help their college life by supporting them with course registration and other activities. It was great to talk a lot and go out for dinner to understand each other!

I also interacted with other international students who I didn't tutor. My best memory was enjoying wearing the Japanese traditional garment - Kimono - in Kamakura together with the international students. The experience as a tutor motivates me to have more connections with people from all over the world even after graduation!



The International Academic Consortium for Sustainable Cities (IACSC) was established in September 2009 with an initiative of Yokohama City University (YCU). The IACSC aims to develop cooperation among its member institutions, **1) to promote international joint research, 2) to conduct joint educational programs, and 3) to contribute to building a sustainable society.**



International symposium sites and themes

Year	Venue	Hosting University	Theme
2010	Japan: Yokohama	Yokohama City University	Exploring Sustainable Cities: A New Role of Universities
2011	Malaysia: Penang	Universiti Sains Malaysia	Towards a Sustainable Urban Future: A Collaboration of Higher Education Institutions and Local Society
2012	Thailand: Bangkok	Thammasat University	Re-imagining Sustainable Cities
2013	The Philippines: Quezon/Manila	University of the Philippines	Transforming Cities into Sustainable and Resilient Communities
2014	Vietnam: Ho Chi Minh	Vietnam National University	Opportunities and Challenges for Urban Sustainable Development
2015	Japan: Yokohama	Yokohama City University	Global Partnership and Local Initiatives for Sustainable Cities
2016	Malaysia: Penang	University Sains Malaysia	Prosperous Urban Living
2017	Thailand: Bangkok	Thammasat University	Well-being of Sustainable Living in Aging Population Era
2018	The Philippines: Manila	University of the Philippines	Equity and Health in Urban Environments in the Era of Sustainable Development
2019	Indonesia: Makassar	Hasanuddin University	To be announced

Global Cooperation Institute for Sustainable Cities (GCI)

The Global Cooperation Institute for Sustainable Cities (GCI) was founded in 2011 within YCU for three purposes: **1) to promote the IACSC activities as its Secretariat, 2) to enhance the cooperation among universities as well as city-to-city collaboration, and 3) to contribute to nurturing students who can be competitive with leadership roles in the international arena.** Students at YCU and other member universities participate in the IACSC activities and interact with each other actively in group work and field studies, where they acquire the abilities to express their opinions, lead discussions, and take necessary actions.

Units

The GCI has three units which promote international research/education collaboration.



Environment



Urban Planning



Public Health

Activities

Education

- Providing various student exchange opportunities among member universities.
- Field work and international student workshops.
- Participation in JST Sakura Exchange Program in Science.

SUDP Sustainable Urban Development Program (short-term international education program)

By introducing fundamental concepts, such as the Eco2 Cities concept, and presenting the experiences, policies and environmental practices from several Asian cities, this intensive program provides students with the knowledge and skills needed to analyse actual cases with a solid theoretical framework.

Publications

- “Eco2 Cities Ecological Cities as Economic Cities,” by the World Bank, an official Japanese translation
- “The Frontiers of Urban Heritage Conservation in Asian Cities,” by the GCI’s Urban Planning Unit
- Sustainable Urban Development Program (SUDP) course textbook
- Report of activities (international symposium, workshop, lecture and student field work)

Research and International Collaboration

- Academic exchange opportunities, such as workshops, international joint research, etc.
- Collaboration with ADB and other international organizations.
- Participation in JICA Partnership Program in Seberang Perai, Malaysia.

YUSS Yokohama Urban Solutions Study (medium-term international program)

This 8-week intensive research program, with an opportunity of internship at the City of Yokohama, offers postgraduate students from member universities of the IACSC insight into the method of urban planning that the city has developed.

YUSS Participant

Dr. Henry Tupas

University of the Philippines, Manila



Orthopedic surgeon Dr. Henry Tupas, who is also the President and COO of QualiMed Hospital in the city of Iloilo, applied to join the YUSS program via the University of the Philippines, Manila, where he is pursuing a Master's degree in Hospital Administration. Dr. Tupas's YUSS research project focused on digital health and its impact on making hospital operations more efficient and cost-effective. He hopes to integrate his findings, in terms of digital health, to QualiMed Hospital's expansion project - with hopes that the findings will support the financial feasibility of the project.

Dr. Tupas enjoyed the field trips organised by the YUSS program, as he views them as priceless opportunities to get a glimpse of the uniqueness of Japan's culture. Besides the field trips, he also visited both of YCU's hospitals, where he had the opportunity to communicate with the hospital informatics team to learn about digital health.

YUSS Participant

Mark Anthony Rabena

University of the Philippines, Los Baños



Mark Rabena, an assistant professor from the University of the Philippines, Los Baños, came from a background in environmental biology and was recommended to apply for the YUSS program by his colleague - who was connected to YCU through a research collaboration with IGES. Mark's YUSS research project focused on the spatial patterns and vegetation structure of green spaces in urban environments, and their impact on land temperature. He is hoping to apply his research findings to the city of Calamba back home in the Philippines.

"What I liked the most about the YUSS program was the diversity of research topics on urban management." Besides that, Mark also liked the diversity of the research members, who come from different countries and cultural backgrounds, which enabled each member to learn more about cross-cultural communication. Joining the YUSS program also enabled him to travel around Tokyo and Kanagawa with the other participants over the weekends.



FACILITIES ON CAMPUS

Our university prides itself on prioritizing our students' education, well-being and development, which is why we provide various facilities to be used by the students on campus. Facilities include three athletics fields, three tennis courts, a gymnasium with indoor running tracks, a strength training room, a martial arts hall, an archery range, a music studio, a swimming pool, a Japanese-style room, student offices, a student conference room, and so much more.





Exchange Student
Térèse Nolan
Jean Moulin University
Lyon III
France

As an exchange student and a guy passionate about Japan since my childhood, I wondered how I would fit in a Japanese university like YCU. The gap between the French education system and the Japanese one is wide, and the best example representing those differences is probably the club system. I'm a big fan of football and a great coincidence made my Japanese tutor the manager of the football club. She prompted me to take a look at one of their training sessions. It looked so fun and intense, that I decided to join soon after.

Unfortunately, because of my busy schedule, I couldn't attend trainings regularly, but I'm glad I did join. Thanks to this experience, I met a lot of passionate students giving their best in what they love while always having fun. I came to stay in shape while doing football, and I left with great memories and many friends. I realized that it's so much easier to break the walls between people through club activities, as there are no more differences or apprehensions, just people sharing one common passion. In my opinion, sports are an international language making the world smaller and bringing people from all horizons together. I can say that my experience in the YCU FC was the concrete evidence of that thought.





Visiting YCU

From airports to Yokohama Station

The closest airport to Yokohama Station is the Tokyo International (Haneda) Airport. It takes around 30 minutes by the Haneda Keikyu Bus, and 22 minutes by the Keikyu Airport Express train. It takes about 90 minutes to get to Yokohama station from Narita International Airport by the JR Narita Express (N'EX) train.

1. Kanazawa-Hakkei Campus

Kanazawa-hakkei campus is located approximately 5 minutes away from the newly renovated Kanazawa-hakkei Station (which serves both the Keikyu and Seaside Line) on foot. It takes about 20 minutes to get to Kanazawa-hakkei Station from Yokohama Station by the Keikyu Limited Express trains.

2. Fukuura Campus, Yokohama City University Hospital, & Advanced Medical Research Center

Fukuura campus is just 1 minute away from Shidai-Igakubu Station (Seaside Line) on foot. The YCU Hospital is located within Fukuura campus, and is connected to the Shidai-Igakubu Station.

3. YCU Medical Center

The YCU Medical Center is 10 minutes walk from Koganecho Station (Keikyu Line), or 4 minutes walk from Bandobashi Station (Yokohama Municipal Subway Blue Line). If taking the bus, the YCU Medical Center is 1 minute walk from Urafune bus stop (Yokohama Municipal Bus).

4. Tsurumi Campus

From the east exit of Tsurumi Station (JR Keihin-Tohoku Line), or from bus stop number 7 at Keikyu-Tsurumi Station (Keikyu Line), take the Fureyu-bound Kawasaki-Tsurumi Rinko bus No. 8. After riding for about 8 minutes, get off at the Riken Shidai Daigakuin-mae bus stop. Tsurumi campus can also be accessed via the JR Tsurumi Line. At Tsurumi station, take the JR Tsurumi Line train, and get off at Tsurumi-ono Station. The campus is about 15 minutes walk away.

5. Maioka Campus, Kihara Institute for Biological Research

Maioka campus is located 10 minutes away from Maioka Station (Yokohama Municipal Subway Blue Line) on foot.

Key Contacts

Office of International Affairs

Phone: +81(0)45 787 2027
+81(0)45 787 2416
Fax: +81 (0)45 787 2370
E-mail: ycuint01@yokohama-cu.ac.jp

Global Cooperation Institute for Sustainable Cities (GCI) & International Academic Consortium for Sustainable Cities (IACSC) Secretariat

Phone: +81 (0)45 787 2249
Fax: +81 (0)45 787 8907
E-mail: kokusai@yokohama-cu.ac.jp

Medical Education Internationalization Section (Fukuura Campus)

Phone: +81 (0)45 352 7968
Fax: +81 (0)45 787 2767
E-mail: ycumedgl@yokohama-cu.ac.jp

Graduate School Admissions

E-mail: admiss3@yokohama-cu.ac.jp

Acknowledgements

Designed & Published by
Public Relations Section,
Yokohama City University

Photography by
Public Relations Section
Loftwork Inc.
InterMAXIS Inc.
YCU Men's Ground Hockey Team
YCU Sailing Team
YCU Baseball Club
YCU Futsal Club VERDADE
YCU Rugby FC
YCU Med Volleyball Team
Ming-Li Lee
Stefan Mueller
Natsuki Rokudo
Térèse Nolan

Additional photography courtesy of
Adobe Stock

© Yokohama City University 2019
No part of this publication may be
reproduced without written permission
of the University.



About the Cover

Yokohama City University's 2019 Prospectus features ginkgo leaves, as well as our main campus' ginkgo tree-lined main street. These magnificent trees were planted by the university's students back in 1948.

YCU
横浜市立大学
YOKOHAMA CITY UNIVERSITY

22-2 Seto, Kanazawa-ku, Yokohama,
Kanagawa, 236-0027 JAPAN

For further information, visit:
www.yokohama-cu.ac.jp/en

@YCU_koho 

/YokohamaCityUniv 

/yokohama_city_university 