



WHAT



WILL

THIS IS A NEW PERSPECTIVE



THIS IS UEA

YOU



DO?

YOUR STUDY ABROAD AND
EXCHANGE GUIDE 2021-22

VISITING UEA

UEA
University of East Anglia

**NORWICH
UNITED
KINGDOM**



Dip your feet into the sea and cycle through the countryside. Meet new friends and inspirational mentors. Study in the UNESCO City of Literature and benefit from outstanding facilities and boundary -pushing research. Discover a new perspective.

Study abroad at UEA



The people I met, places I visited, and memories I made as a result of studying abroad at UEA have remained with me and changed how I see myself and how I see the world.

Julia, Carleton University, Canada

CONTENTS

2	This is UEA	12	Arts and Humanities
3	Why UEA?	14	Social Sciences
4	This is Norwich	16	Science
8	This is community	18	Support
10	Academic life	20	How to apply
11	Your course	22	Contact us

THIS IS UEA

Ground-breaking projects, meaningful ideas and life-changing research. A lot happens at UEA, and anything is possible when the right individuals come together.

The people make UEA unique. There's a thriving community on campus with 17,000 students living and learning together. Studying abroad at UEA, you'll join over 3,500 international students from more than 100 countries. But at UEA, you're not just a number. You're an important part of our community. Wherever you're from, we'll nurture your talent and help you develop and succeed – making your time abroad the most memorable part of your university degree.

UK TOP 25

The Times/Sunday Times 2020 and Complete University Guide 2020

World Top 200

Times Higher Education World University Rankings 2020



Undoubtedly, I encourage other people from all around the world to travel and have new and amazing experiences at UEA!

Lola, Universidad de Alicante, Spain

WHY UEA?

1.

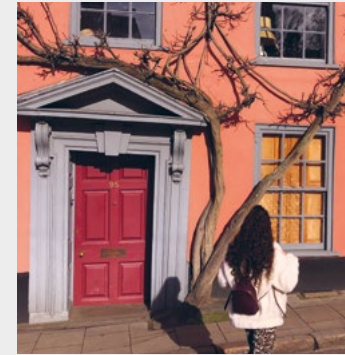
ACADEMIC EXCELLENCE

Academics publishing innovative research, state-of-the-art educational facilities and a wide choice of modules combine to offer you a unique academic programme. Complement your current studies and return with new ideas and perspectives.

2.

ENRICHMENT

At UEA, you'll have an experience like no other, immersed in a culture that's forward-thinking, stimulating and fun. And, with hundreds of sports clubs and societies, free events and activities, you can either develop your passions or find new ones.



3.

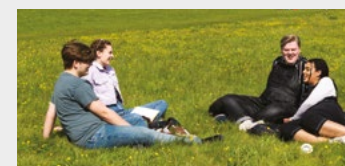
DISCOVERY

Get a taste of what living in the UK is really like in a typical British city, Norwich. Yet this award-winning city stands out for its safety, friendliness and creativity.

4.

ADVENTURE

Eager to explore the rest of the UK and Europe? Norwich is a great base from which to travel with fantastic rail, road and air links.



5.

SUPPORT

Our dedicated Study Abroad team is here to ensure that you have the support you need through every step of your Study Abroad journey. We'll help you prepare for your new experience at UEA, as well as offering advice while you're here to ensure you make the most of your time in the UK.





The top
vegetarian and most
**VEGAN
FRIENDLY**
city in the UK
Huffington Post 2019



One of the most
**CLIMATE
FRIENDLY**
English cities
Friends of the Earth 2019

THIS IS NORWICH

Norwich is the city of stories, full of creativity, history and culture. And there's an independent streak running through every person and every place.

From unique bars and music venues to beautiful landmarks and medieval halls. From the iconic cobbled lanes full of independent shops to the cosmopolitan Golden Triangle. From boutiques and high-street shops to rich and varied food options.

Just 20 minutes from your campus, Norwich city centre is an amazing place to explore. It's home to hundreds of creative small businesses, restaurants, shops, clubs, gig spots and bars, nestled along winding alleys and beside an award-winning open-air market. Not to mention two major shopping malls, a thriving high street and several department stores.

There's a warren of vintage collectables in a converted chapel at St Gregory's. You can see Norwich from the river with Pub and Paddle tours. You can watch everything from the latest blockbusters to cult classics and international films at Cinema City – one of the largest independent cinemas in the UK. And with the likes of Norwich Castle and the atmospheric Strangers' Hall on your doorstep, our city is the perfect place to take in some history.



One of the
**BEST PLACES
TO LIVE**
in the UK
The Sunday Times 2020



Norwich is England's first UNESCO City of Literature – one of only 20 in the world – so it has a literary scene that's second to none. This creative city lives and breathes arts and culture. In May, it plays host to the annual international Norfolk & Norwich Festival. Clear your diary for 17 days of art, literature, dance, theatre and music.

UEA also sits in a beautiful part of the world. Norwich is the only UK city located in a National Park – the Norfolk Broads. The stunning Norfolk coastline is easy to reach, boasting beautiful UK beaches. Perfect if you're hoping to relax with friends or explore some natural beauty between classes.

[FIND OUT MORE >](#)





In the

TOP 10 MOST AFFORDABLE

university cities in the UK

Study International 2019





Home to

STUDENTS FROM 120 NATIONALITIES





Norwich is in the

TOP 10 SAFEST PLACES TO BE A STUDENT

The Telegraph 2017



THIS IS COMMUNITY

Our mini-city campus is a multicultural community with a varied social and cultural scene. Set in acres of parkland, UEA was designed so everything you need for living and studying is just a few minutes away. That's why we've won awards for our green spaces and unique campus community.

MARVEL CONNECTIONS

It's not just the Ziggurat buildings that make our campus unique. You can see our very own Sainsbury Centre in several of the Marvel movies, from Ant-Man and Captain America: Civil War to the latest Avengers movie, Endgame. And not only that, co-director Joe Russo studied Scriptwriting here at UEA.



I'd definitely recommend UEA to anybody considering studying abroad. It is a truly unique place; the students are so active with the Students' Union, the campus is great and the locals are friendly... my small amount of time here has been life-changing in infinite ways.

Tavish, Goucher College, USA

UEA boasts world-class facilities including state-of-the-art equipment, a first-rate sports centre and a cutting-edge art gallery. Our library is one of your greatest allies. Not only does it give you a flexible study space 24/7, but you'll have more than 800,000 books and journals at your fingertips.

STUDENTS' UNION

There are more than 250 societies – from a conservation to a running society with many more in between. Whatever you're into, there's a society for you. You can also join one of many UEA sport clubs. There's everything from the usual team sports to fencing, mountaineering and snooker.

uea+sport >

The SU runs all sorts of facilities and venues too, including the ethically-focused Unio Coffee Shop, the pub, the campus shop, and the LCR and Waterfront music venues. It also provides valuable academic and legal advice to students if they need it. We support our student community to run the UEA clubs and societies and put on hundreds of free events and activities every year, where

you can find your passion and meet new people.

UEA has a huge arts and music scene, on and off campus. The Sainsbury Centre hosts talks, tours, films, exhibitions and special events. And the SU hosts over 50 gigs a year – including the likes of Stormzy, Lewis Capaldi and The Killers – as well as a range of alternative club nights.





ACADEMIC LIFE

At UEA, we're proud of the diverse and thriving community that strengthens everything we do.

A community alive with academic innovation, ideas that disrupt the status quo, and research that changes the world. A community of unique people ready to tackle today's biggest challenges, together.

Internationally renowned research is part of our DNA – we've been known for distinctive thinking since our inception. In fact, the most recent UK Government Research Excellence Framework (REF), rated more than 82% of our research world-leading or internationally excellent.

From understanding the impact of Brexit to generating clean energy from bio-batteries, whether

we're developing a mobile game to detect the early signs of dementia or investigating the role of surveillance in tomorrow's internet, all of our research is about building a better, healthier world. UEA's academics actively integrate their own research into their modules, providing students with an opportunity to learn about the very latest discoveries and how they got there.

82%

of our research
rated world leading
or internationally
excellent.

UK Government Research
Excellence Framework (REF)



The campus fosters an indescribable sense of community that I had never experienced anywhere else.

Nicole, Simon Fraser University, Canada

YOUR COURSE

We use a range of teaching styles to inspire you, including interactive classes, real-world research and exciting projects.

Our Learning Enhancement Tutors can help you improve your work with expert guidance on study skills, maths and statistics, academic writing and use of English.

And your School will assign you a personal adviser to help you get the most from your studies. You'll monitor your progress together and they'll be there to go through feedback with you to help you learn from it.

A full workload is 60 UCU credits (30 ECTS) per semester, which generally equates to three modules per semester. However, it may be different depending on the options you take.

You can choose from a range of modules that allow you to specialise in areas of study or opt for a more interdisciplinary approach, combining these from different schools of study.

We encourage you to search our module catalogue to gain an overview of the many exciting modules available to our visiting students.

[VIEW MODULE CATALOGUE >](#)



ARTS & HUMANITIES

With its vibrant arts scene and status as a UNESCO City of Literature, Norwich is a fantastic backdrop to your study of Arts and Humanities.

Take an Art History class and study relevant objects first-hand in the Sainsbury Centre, home to works by major European artists such as Francis Bacon, Henry Moore and Picasso, as well as art and antiques from different periods and cultures around the world. Or feel inspired for your module on Medieval History by exploring Norwich, a city scattered with buildings and relics from times gone by.

Want to hear from current practitioners and learn from current professionals? Explore modules in Politics and International Relations. Or perhaps you're interested in British politics and want to hear your fellow students' current opinions about this controversial year in British political history.

We also have a broad range of modules in British and American literature, with our School of Literature, Drama and Creative Writing producing notable alumni including prize-winning author Ian McEwan and Nobel Prize in Literature winner, Kazuo Ishiguro. We established the very first Creative Writing MA in the UK in 1970 and have been seen as leaders in the field ever since.

Make use of the East Anglian Film Archive and our links to the British Film Institute in London by learning about film, television and other media in the creative and cultural contexts to which they are produced. Learn from industry experts about media and publishing, with opportunities to specialise in various aspects of media production.

If you still have a thirst for more, why not take advantage of our state-of-the-art language centre, taught by a team of native speakers with modules on language, translation and communication studies?

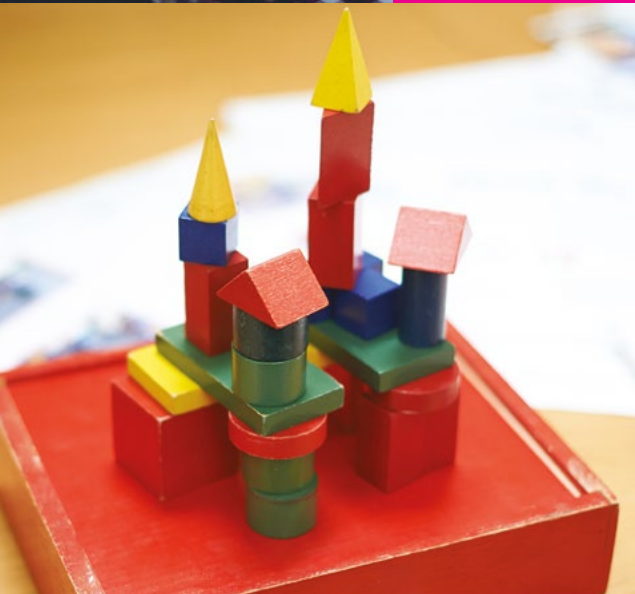
AVAILABLE SUBJECT AREAS:

History	Film, Media and Television	Political, Social and International Studies
Language and Communication Studies	American Studies	World Art Studies
Literature, Drama and Creative Writing	Philosophy	

[VIEW MODULE CATALOGUE >](#)



SOCIAL SCIENCES



Our Social Sciences Faculty is at the forefront of academic and professional development, with students able to benefit from outstanding study facilities and boundary-pushing research.

Psychology modules are accredited by the British Psychological Society and offer a broad range of modules across the field. Get first-hand experience in laboratories, our fully immersive virtual reality suite, or with electroencephalography (EEG), eye-tracking and motion tracking equipment.

Studying at our School of Law means joining a vibrant community of experts and ambitious students. Learn how to Moot or be involved in the Law Society to further develop your skill set outside of the classroom.

Be part of the Norwich Business School and benefit from strong industry links to local companies, including Aviva and Barclays, and enjoy studying in the Enterprise Centre, a regional business hub and one of the greenest buildings in the UK.

Or join our equally impressive School of Economics which has been ranked in the top 10 by the Guardian League Table 2020. Modules cover a wide range of areas to help you get under the skin of behavioural and experimental economics and gain expertise in competition policy.

Immerse yourself in our research in economic theory, applied econometrics and finance and in policy areas aof environment, resources, conflict and migration.

Join the conversation on poverty reduction and environmental stability by selecting modules in our school of International Development, a School with a global reputation for excellence.

Alternatively, if you're fascinated by the learning process and looking for modules in the field of education, look no further than our School of Education and Lifelong Learning. Here you'll be introduced to the UK's Education sector and explore the sport, health and fitness industries within both regional and national education development agencies.

AVAILABLE SUBJECT AREAS:

Economics	Law	Sociology
Education	Business	
International Development	Psychology	

[VIEW MODULE CATALOGUE >](#)



SCIENCE



The right facilities are essential for making things happen. And Norwich Research Park has some of the best in the world. It's one of Europe's largest collaborative research sites, with UEA at its heart. No wonder the Science Faculty has so much to offer!

UEA's £30 million teaching and learning building opened in 2019. This state-of-the-art building includes three floors of flexible teaching laboratories, allowing you to gain invaluable hands-on experience using a range of scientific equipment to develop your research techniques.

The School of Biological Sciences allows you to learn from academics who are using their research to better the natural world, with researchers exploring cataract surgery, fish stock conservation and migratory wading birds, to name a few! Explore the entire scale of biological systems from molecules to ecosystems; research food security, biotechnology and human health. Visiting students with pre-med course requirements will find a range of suitable options.

UEA's flagship School of Environmental Sciences is home to the Tyndall Centre for Climate Change Research, the Water Security Research Centre and the largest interdisciplinary institution in Europe. Take modules in Environmental Sciences or Geography, taught by academics who regularly advise on policy issues concerning major global challenges.

Join UEA's School of Chemistry to be part of a tight-knit scientific community, work with leading researchers, rated 4th in the UK in the Times Higher Education analysis of the 2014 Research Excellence Framework. This School boasts notable expertise in organic synthesis, catalysis, biological chemistry and chemical physics. Courses in the School of Pharmacy are designed to help you excel as both a practitioner and a scientist, with plenty of hands-on experience with patients.

Our Schools of Mathematics and Computing Sciences combine academic rigour with a supportive community, with a variety of modules on mathematical patterns, relations and theories. Get ready to enhance your skills in analysis and deductive reasoning among motivated peers.

AVAILABLE SUBJECT AREAS:

Biology	Environmental Sciences	Actuarial Sciences
Chemistry	Mathematics	Geography
Computing Science	Pharmacy	
Engineering	Physics	

[VIEW MODULE CATALOGUE >](#)

SUPPORT

We recognise that things can be a little daunting when studying overseas, but we have a dedicated team to support you.

Acting as a central point of contact, the UEA Study Abroad team will help you with everything from your initial questions through to your completion of your time with us.

The Study Abroad team also organise regular social activities for you to connect with other students studying abroad, ranging from quiz nights to treasure hunts and a buddy scheme supported by UEA student ambassadors who have studied abroad too.

UEA's Wellbeing Advisory Team is here to help you get the support you need – from one-to-one support or workshop and group sessions with trained wellbeing advisers, to helping with temporary incapacity (like breaking your hand), and wellbeing worries (like anxiety and bereavement). Our Talking Therapies Team also offers counselling and cognitive behavioural therapy, and you'll find self-help resources on the Student Services website.

The Student Life Team forms an integral part of our Student Support Services and consists of advisers dedicated to supporting international students. You can make one-to-one appointments if you need personal or welfare advice. The team can also provide immigration and visa advice, as well as general guidance about studying in the UK.



It's easy to find your way around, but it's also easy to get lost in the rich history behind every street... Norwich and the University of East Anglia welcomed me with warm and open arms into their beautiful community, and I will cherish my short time here for the rest of my life.

Rebecca, Temple University, USA



ACCOMMODATION OPTIONS

Our on-campus accommodation includes award-winning architecture with beautiful views of the lake. From our iconic Ziggurats with their huge windows, from en-suite singles to two-bedroom houses, you'll find somewhere to call your home.

If you prefer city living to campus life, you have the option to live in the heart of Norwich in modern, high-quality accommodation designed expressly for students. These en suite single and studio flats have everything from communal living and study spaces to secure bike storage,

a launderette and, of course, powerful Wi-Fi. Or, you could opt for private rental accommodation in Norwich. For more advice from our Students' Union [click here](#).

Students also have the option to live in homestay accommodation, which is a fantastic way to experience life like a local while studying in Norwich. This offers Study Abroad and Exchange students the opportunity to practice their English and experience British culture living with a local family. We provide homestay accommodation in urban and suburban areas of Norwich, with UEA reachable on foot or by public transport.



The Study Abroad team at UEA made everything really easy and they are always quick to reply to emails, from helping you with your classes to accommodation.

Joel, Macquarie University, Australia

HOW TO APPLY

EXCHANGE STUDENTS

Does your home university have an exchange agreement with UEA? You may be eligible to study at UEA as an exchange student for a semester or a full year. Exchange students must be nominated by their home university to study at UEA as an exchange student. Once nominated, you will find out how to apply. You will pay no tuition fees to UEA (you will pay tuition fees to your home university) and will be responsible for any other costs associated with your exchange, such as accommodation, living expenses and travel.

To explore the option of visiting UEA as an exchange student, please contact your home university's Study Abroad Office and [explore online](#).

FEE-PAYING STUDENTS

If your university is not currently an exchange partner of UEA or you cannot study as an exchange student, you can study at UEA as a fee-paying student for one semester or for a full year.

For information about tuition fees please [read this](#).

Talk with the Study Abroad office at your home university about applying to study abroad and the transfer of credits, whether you apply as an exchange student or a fee-paying study abroad student. UEA's Study Abroad team will provide you with support throughout the entire process.

ENTRY REQUIREMENTS

All applicants are expected to be in good academic standing at their home university with a grade equivalent to a UK system upper second class (60%) or to a US system GPA of 3.0.

Please contact visiting.uea@uea.ac.uk for more information or if you have questions about UEA entry grades. Non-native English speakers and students from certain countries must be able to demonstrate an acceptable level of English language.

For further information [click here](#).

APPLICATION DEADLINES

For 2021 autumn semester and full academic year: 1 June 2021

For 2022 spring semester: 31 October 2021

Contact us if you have any questions regarding your application: visiting.uea@uea.ac.uk

START YOUR APPLICATION >



THE APPLICATION PROCESS

EXCHANGE STUDENTS

1. Talk to your home university's Study Abroad team
2. Your home university nominates you to UEA
3. You apply to UEA: complete our online application form
4. We email you an official study offer
5. You accept formally

FEE-PAYING STUDENTS

1. Get an academic reference from your home university
2. You complete our online application form
3. We email you an official study offer
4. You accept formally



SPRING SEMESTER 2021*

Teaching Dates:
18 January – 21 May 2021

Easter Break:
27 March – 25 April 2021

Exam Period:
24 May – 18 June 2021

AUTUMN SEMESTER 2021*

Teaching Dates:
27 September 2021 – 17 December 2021

Christmas Break:
18 December 2021 – 16 January 2022

SPRING SEMESTER 2022*

Teaching Dates:
17 January – 25 March 2022

Semester Continues:
25 April – 20 May 2022

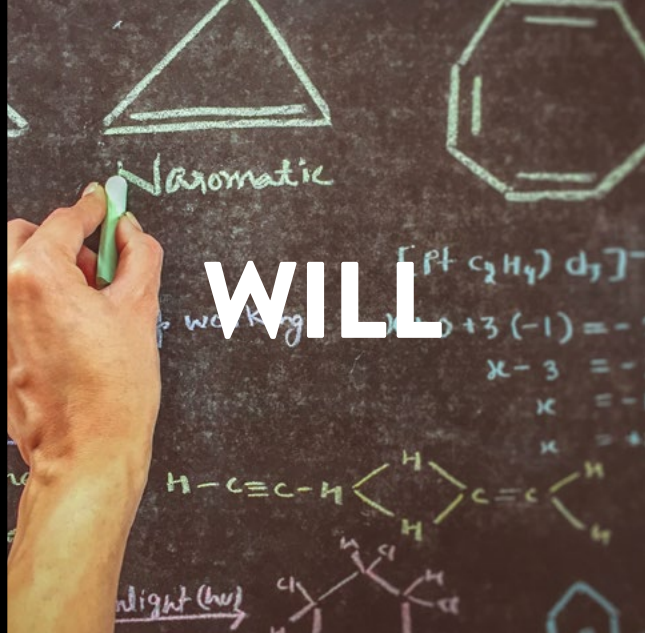
Easter Break:
26 March – 24 April 2022

Exam Period:
23 May – 17 June 2022

*We strongly encourage students to [check here](#) for the accuracy of dates as these could be subject to change.



WHAT



WILL



YOU



STUDY?

Contact us


E: visiting.uea@uea.ac.uk


T: +44 (0) 1603 591871


[VISIT OUR WEBSITE >](#)

[READ OUR BLOG >](#)

Or follow us on:

 [@visitinguea](#)

 [ueastudyabroadofficial](#)

 [@ueastudyabroad](#)